

DUMP PUMPS

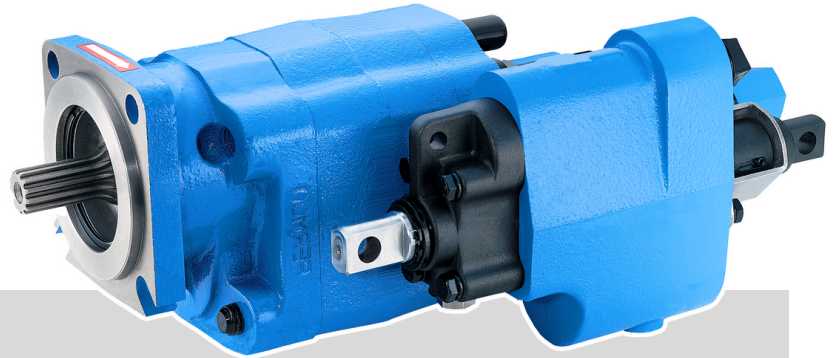
Heavy & Medium Duty Trucks & Trailers



Hydraulic Pumps and Motors

BUILT FOR PERFORMANCE AND DURABILITY

Permco's DM Series Dump Pumps are the Industries choice for proven fleet dependability. Available in both Direct Mount and Remote Mount applications, providing the highest pressure ratings and GPM requirements to meet newer cylinder designs. Three-line hose connections are recommended for applications operating hydraulic systems that experience more frequent use.



FEATURES

- Pump and cylinder protected in the “Raise” and “Neutral” position of the spool.
- Manual or air shift available.
- Built-in load check maintains dump body angle and is installed in the cylinder port for superior self-cleaning.
- NPT & SAE/ORB ports are available.
- Built-in direct acting relief valve set at factory.
- Flows of **27 and 33 theoretical GPM** at 1200 pump RPM.
- Speeds **up to 2400 pump RPM**, do not exceed 5 InHg at inlet port.
- Pressures **up to 2500 PSI** (172 bar).
- High-strength alloy steel gear and shaft set.
- Neutral lock-out safety cap for use with pull-out cable.
- 2-line for intermittent duty or 3-line for continuous duty systems.
- 2 or 4 extra long studs for easy installation of pump support bracket on direct mount
 - (2 is standard)
- Pressure balanced wear plates maintain high pump efficiency throughout all operating ranges.
- DIN mount and shaft available.
- **100% factory tested.**

SCAN FOR
INSTALLATION
INFORMATION



3-LINE DUMP SYSTEM

A 3-line system includes a separate line to return hydraulic oil from the cylinder directly to the reservoir instead of forcing its way back through the inlet line. The separate line is recommended because the 3-line pump allows faster down cycles, provides an easier method of filtering the hydraulic oil, and ultimately runs cooler. While trucks with dump bodies, or end dump trailers, can typically operate with a 2-line hydraulic design, a 3-line design is best when used on trucks that see frequent dump cycles. **Permco recommends 3-line systems for maximum performance and durability.**

DATASHEET_M-HDUMP_Rev1_4-26

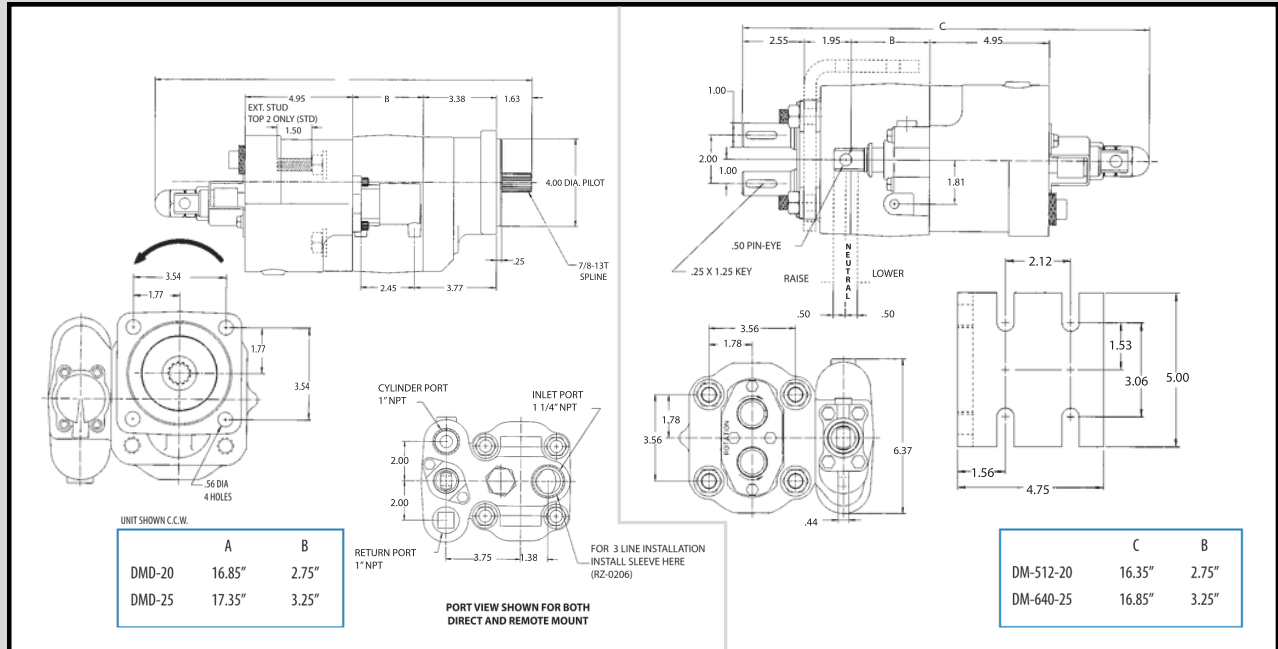
1500 Frost Rd. | P.O. Box 2068
Streetsboro, Ohio 44241

330-626-2801
support@permco.com

www.permco.com



DIMENSIONAL DATA (INCHES)



Dump Pumps are not recommended for ejector, conveyor, or moving floor type applications; Please refer to the Gemini Series brochure for those use cases.

DIRECT MOUNT

DMD - 25 - Z - L - AS - 20 - E4

Dump Pump

Direct Mount, SAE 4 Bolt "B"

Gear Size

20 - 2.0" Gear, 5.15 In³ / 40 GPM¹ at 1800 RPM²
25 - 2.5" Gear, 6.43 In³ / 50 GPM¹ at 1800 RPM²

Line Setup

X - 2 Line (Without 3 Line Sleeve)
Z - 3 Line (With 3 Line Sleeve)

Rotation

L - Left Hand Rotation
R - Right Hand Rotation

Extended Stud

Delete - Top Two (Std.)
EB - Bottom Two
EL - Left Side
ER - Right Side
E4 - All Four

Relief Valve Setting

20 - 2000 PSI (137 bar)
25 - 2500 PSI (172 bar)

Shift Type

AS - Air Shift
MS - Manual Shift

REMOTE MOUNT

DM - 640 - 25 - ZR - M - T - 200

Dump Pump

Remote Mount

Displacement

512 - 5.15 In³ per revolution¹
640 - 6.43 In³ per revolution¹

Gear Size

20 - 2.0" Gear / 40 GPM¹ at 1800 RPM²
25 - 2.5" Gear / 50 GPM¹ at 1800 RPM²

Line Setup

X - 2 Line (Without 3 Line Sleeve)
Z - 3 Line (With 3 Line Sleeve)

Relief Valve Setting

200 - 2000 PSI (137 bar)
250 - 2500 PSI (172 bar)

Shift Type

AS - Air Shift
T - Manual Shift

Mounting Bracket

M - With Mounting Bracket (Std.)
O - Without Mounting Bracket

Valve Orientation

L - Left Side
R - Right Side (Std.)

¹Theoretical value.

²Do not exceed 5 InHg at inlet port.

DATASHEET_M-HDUMP_Rev1_4-26