

5151 SERIES

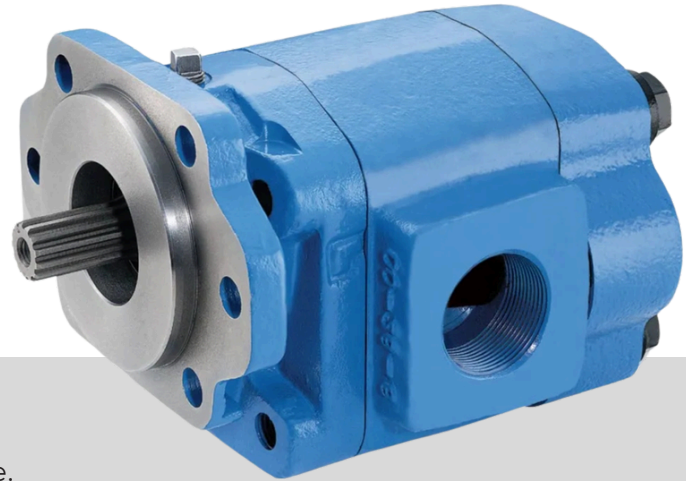
Bearing Pumps & Motors



Hydraulic Pumps and Motors

PERMCO PERFORMANCE

Permco's 5151 Pumps or Motors are the sensible choice for hydraulic systems requiring higher flow and pressure ratings. Heavy duty cast iron construction with doweled connection joints for higher pressures. Hundreds of configurations available to customize the unit to your unique application. Each unit is 100% factory tested after assembly.



FEATURES

- Medium frame size for improved clearance.
- Doweled and high strength cast iron construction.
- Porting locations options: Side, Rear, or Side & Rear.
- Porting size and type offerings can be customized to the application.
- Bi-rotational or dedicated CW or CCW.
- Pressure balanced wear plates that maintain high pump efficiency throughout all operating conditions.
- Optional Motor Case Drain when used as a Motor.
- Best in class gear size offerings from **3.86 in³ up to 7.07 in³**.
- Pressure ratings **up to 3000 PSI**.
- Offered in single, tandem, triple or quad sections.
- Available with or without additional shaft support bearing

COMMON APPLICATIONS

- Tow and Recovery
- Construction Equipment
- Industrial Applications
- Bulk Feed
- Refuse Trucks
- Mining Applications
- Liquid Transfer Trucks



DATASHEET_5151_Rev1_2-23-26

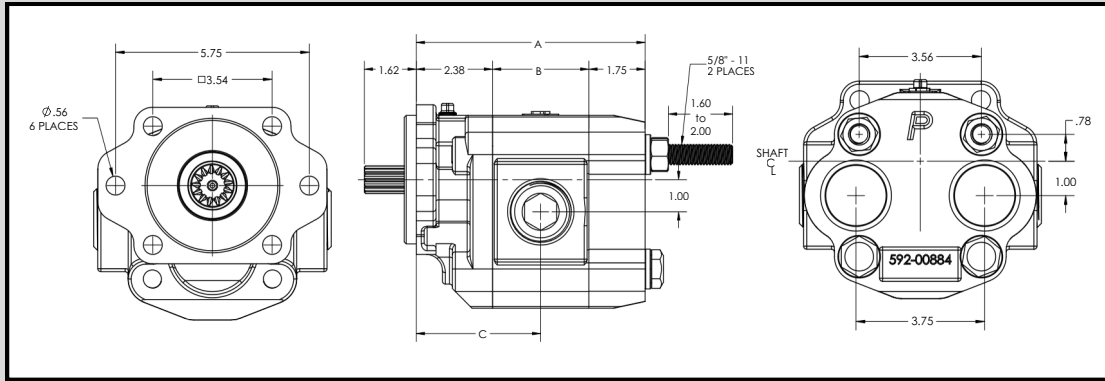
1500 Frost Rd. | P.O. Box 2068
Streetsboro, Ohio 44241

330-626-2801
support@permco.com

www.permco.com



DIMENSIONAL DATA (INCHES)



SCAN FOR
INSTALLATION
INFORMATION



PUMP SPECIFICATIONS

TYPE II (Shown Above)

Gear Size (in)	A	B	C	Displacement (In ³)	Theoretical GPM (At 1000 RPM)	NPT/ORB Ports (Side / Rear)	Min RPM	Max RPM*	Max Pressure PSI (bar)
1.50	6.38	2.25	3.50	3.86	17	1.00 / 1.5	600	3000	3000 (207)
1.75	6.63	2.50	3.63	4.50	19	1.25 / 1.5	600	3000	3000 (207)
2.00	6.88	2.75	3.75	5.15	23	1.25 / 1.5	600	3000	2500 (172)
2.25	7.13	3.00	3.88	5.79	25	1.5 / 1.5	600	2500	2500 (172)
2.50	7.38	3.25	4.00	6.43	27	1.5 / 1.5	600	2500	2500 (172)
2.75	7.63	3.50	4.13	7.07	30	1.5 / 1.5	600	2500	2000 (137)

TYPE I (Consult the Design Engineer's Handbook or Perenco Code Books for more details for Type I Shaft End Covers & Shafts)

Gear Size (in)	A	B	C	Displacement (In ³)	Theoretical GPM (At 1000 RPM)	NPT/ORB Ports (Side / Rear)	Min RPM	Max RPM*	Max Pressure PSI (bar)
1.50	7.38	2.25	4.50	3.86	17	1.00 / 1.5	600	3000	3000 (207)
1.75	7.63	2.50	4.63	4.50	19	1.25 / 1.5	600	3000	3000 (207)
2.00	7.88	2.75	4.75	5.15	23	1.25 / 1.5	600	3000	2500 (172)
2.25	8.13	3.00	4.88	5.79	25	1.5 / 1.5	600	2500	2500 (172)
2.50	8.38	3.25	5.00	6.43	27	1.5 / 1.5	600	2500	2500 (172)
2.75	8.63	3.50	5.13	7.07	30	1.5 / 1.5	600	2500	2000 (137)

* Maximum RPM dependent upon inlet size and conditions. Do not exceed inlet vacuum of 5 InHg



DATASHEET_5151_Rev1_2-23-26

1500 Frost Rd. | P.O. Box 2068
Streetsboro, Ohio 44241

330-626-2801
support@permco.com

www.permco.com

