



With Permco, it's personal.

Mobile Hydraulics

TRUCK MARKET FAMILY OF PRODUCTS

PERMCO USA 1500 Frost Rd. | P.O. Box 2068 | Streetsboro, Ohio 44241
330.626.2801 | support@permco.com



DUMP TRUCK/TRAILER

LIVE BOTTOM & WALKING FLOORS

REFUSE EQUIPMENT

BULK FEED EQUIPMENT

TOW AND RECOVERY

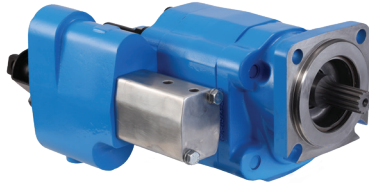
OIL FIELD EQUIPMENT

MUNICIPAL AND CONSTRUCTION
EQUIPMENT

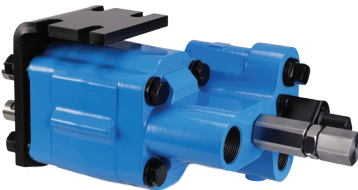
CHEMICAL TRANSFER EQUIPMENT

Dump Pump DMD SERIES

Pump/Valve Assembly for
Medium and Heavy-Duty
Dump Trucks & Trailers



DMD-25 WITH AIRSHIFT



DM-640

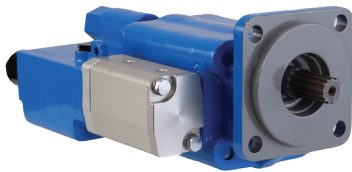
- SAE 4 bolt B mounting flange, $\frac{7}{8}$ " 13 T B spline
Remote mount also available
- Flows up to 49 GPM at 1800 pump RPM
- Manual shift or factory installed air shift
- NPT ports standard, SAE/ORB ports are optional
- SAE 1" 15 T BB spline or DIN 5462 mount available
- 3-line for continuous duty systems or 2-line for intermittent duty
- Speeds to 2400 RPM
- Pressures to 2500 PSI
- Pump and cylinder protected in the "raise" and "neutral" position of the spool when using a 3 line continuous system
- 100% Factory Tested

SERIES	IN ³ (CC)	GPM@900 PUMP RPM	GPM@1200 PUMP RPM	GPM@1500 PUMP RPM
DMD-20	5.12 (84.3)	20.0	26.5	33.0
DMD-25	6.40 (105.4)	25.0	33.0	41.5

Pump flows are based on theoretical values
Maximum RPM is dependent upon inlet Hg conditions, not to exceed 5 inHg

Dump Pumps DMD-300/400 SERIES

Light & Medium-Duty
Dump Trucks



DMD-400 WITH AIRSHIFT



- SAE 4 bolt B mounting flange, $\frac{7}{8}$ " 13 T B spline
Remote mount is also available
- Flows up to 31 GPM at 1800 pump RPM
- Manual shift or factory installed air shift
- NPT ports standard
- SAE 1" 15 T BB shaft available
- 3-line for continuous duty systems or 2-line for intermittent duty
- Pump and cylinder protected in the "raise" and "neutral" position of the spool
- Speeds to 2400 RPM
- Pressures to 2500 PSI
- 100% Factory Tested

SERIES	IN ³ (CC)	GPM@900 PUMP RPM	GPM@1200 PUMP RPM	GPM@1500 PUMP RPM
DMD-300	3.0 (49.2)	11.5	15.5	19.5
DMD-400	4.0 (65.6)	15.5	20.5	26.0

Pump flows are based on theoretical values
Maximum RPM is dependent upon inlet Hg conditions, not to exceed 5 inHg

Roller Bearing Pumps and Motors

SPECIFICATIONS



2100



5151



7600

2100 SPECIFICATIONS

GEAR SIZE	.50	.75	1.00	1.25	1.5	1.75	2.0
GPM/1000 RPM	•	•	8.6	10.8	13.0	15.2	17.3
IN3	1.0	1.5	2.0	2.5	3.0	3.5	4.0
CC	16.4	24.6	32.8	41.0	49.2	57.3	65.5
MAX RPM •••	2400	2400	2400	2400	2400	2400	2400
MAX PSI ••	3000	3000	3000	3000	3000	2500	2500

CONTACT TECHNICAL SERVICES FOR MOTOR SPECIFICATIONS

Pump flows are based on theoretical values

5151 SPECIFICATIONS

GEAR SIZE	1.5	1.75	2.0	2.25	2.5
GPM/1000 RPM	16.7	19.4	22.3	25.0	27.8
IN3	3.86	4.50	5.15	5.79	6.43
CC	63.2	73.8	84.3	94.9	105.4
MAX RPM •••	3000	3000	3000	2500	2500
MAX PSI ••	3000	3000	2500	2500	2500

CONTACT TECHNICAL SERVICES FOR MOTOR SPECIFICATIONS

Pump flows are based on theoretical values

7600 SPECIFICATIONS

GEAR SIZE	.50	.75	1.00	1.25	1.5	1.75	2.0	2.25	2.5	2.75	3.0
GPM/1000 RPM	•	•	17.4	21.9	26.2	30.6	35.0	39.4	43.7	48.0	52.3
IN3	2.02	3.03	4.04	5.06	6.07	7.08	8.09	9.1	10.1	11.1	12.1
CC	33.1	49.7	66.3	82.8	99.4	116.0	132.5	149.1	165.7	182.2	198.8
MAX RPM •••	2400	2400	2400	2400	2400	2400	2400	2400	2400	2400	2400
MAX PSI ••	3000	3000	3000	3000	3000	3000	2500	2500	2500	2000	2000

CONTACT TECHNICAL SERVICES FOR MOTOR SPECIFICATIONS

Pump flows are based on theoretical values

- Please consult Permco on these gear sizes.
- The information shown above represents the maximum continuous operating conditions
- Maximum RPM is dependent upon inlet Hg conditions, not to exceed 5 in-Hg

Sleeve Bushing Pumps and Motors

SPECIFICATIONS



124



197



257



360

124 SPECIFICATIONS

GEAR SIZE	.50	.75	1.00	1.25	1.5	1.75	2.0
GPM/1000 RPM	2.6	4.0	5.3	6.7	8.0	9.4	10.7
IN3	0.62	0.93	1.24	1.55	1.86	2.17	2.48
CC	10	15	20	25	30	35	40
MAX RPM ●●●	3000	3000	3000	3000	3000	3000	3000
MAX PSI ●●	3500	3500	3500	3500	3300	2900	2500

CONTACT TECHNICAL SERVICES FOR MOTOR SPECIFICATIONS

Pump flows are based on theoretical values

197 SPECIFICATIONS

GEAR SIZE	.50	.75	1.00	1.25	1.5	1.75	2.0
GPM/1000 RPM	•	•	8.5	10.6	12.8	14.9	17.0
IN3	0.99	1.48	1.97	2.46	2.96	3.45	3.94
CC	16.1	24.2	32.3	40.4	48.4	56.5	64.6
MAX RPM ●●●	2400	2400	2400	2400	2400	2400	2400
MAX PSI ●●	•	•	4000	4000	3750	3500	3250

CONTACT TECHNICAL SERVICES FOR MOTOR SPECIFICATIONS

Pump flows are based on theoretical values

257 SPECIFICATIONS

GEAR SIZE	.50	.75	1.00	1.25	1.5	1.75	2.0	2.25	2.5
GPM/1000 RPM	•	•	11.1	13.8	16.7	19.4	22.2	25.0	27.8
IN3	1.29	1.93	2.57	3.21	3.86	4.50	5.14	5.78	6.43
CC	21.1	31.6	42.1	52.6	63.2	73.7	84.2	94.8	105.3
MAX RPM ●●●	2400	2400	2400	2400	2400	2400	2400	2400	2400
MAX PSI ●●	4500	4500	4500	4500	3500	3250	3000	2750	2500

CONTACT TECHNICAL SERVICES FOR MOTOR SPECIFICATIONS

Pump flows are based on theoretical values

360 SPECIFICATIONS

GEAR SIZE	.50	.75	1.00	1.25	1.5	1.75	2.0	2.25	2.5
GPM/1000 RPM	•	•	15.5	19.4	23.3	27.2	31.1	35.0	38.9
IN3	1.80	2.70	3.60	4.50	5.40	6.30	7.20	8.10	9.00
CC	29.5	44.2	59.0	73.8	88.5	103.3	118.0	132.8	147.5
MAX RPM ●●●	2400	2400	2400	2400	2400	2400	2400	2400	2400
MAX PSI ●●	3500	3500	3500	3500	3500	3500	3500	3250	3000

CONTACT TECHNICAL SERVICES FOR MOTOR SPECIFICATIONS

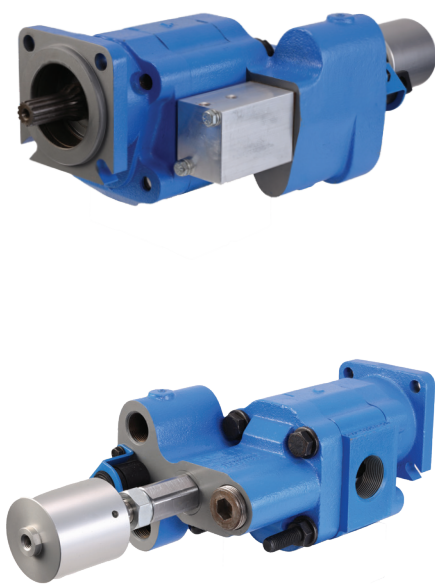
Pump flows are based on theoretical values

- Please consult Permco on these gear sizes.
- The information shown above represents the maximum continuous operating conditions
- ●●● Maximum RPM is dependent upon inlet Hg conditions, not to exceed 5 in-Hg

Customer service: 330.626.2801 | support@permco.com

Gemini Dual-Use Pump

Genimi Dual-Use Pump designed to be used with multiple applications requiring 2 relief valve pressure settings.



- SAE 4 bolt B mounting flange 7/8" 13 T BB spline
- Remote mount option available
- Flows up to 39 GPM at 1800 pump RPM
- Air shift factory installed with full metering capabilities
- NPT ports are standard. SAE/ORB ports are available.
- SAE 1" 15 T BB spline or DIN 5462 available
- 3-line system for continuous duty
- Speeds to 1800 RPM
- 2500/3200 relief setting PSI factory standard. Field adjustable.
- Allows higher PSI cylinders to be operated for maximum capability
- Return Line to be plumbed below oil reservoir fluid Level. Check valve 504-01903 (@ 2 PSI) available for above fluid level.
- Recommend using a 20 micron return line oil filter
- 100% Factory Tested

SERIES	IN³ (CC)	GPM@900 PUMP RPM	GPM@1200 PUMP RPM	GPM@1500 PUMP RPM
DG-20	5.12 (84.3)	20.0	26.5	33.0

Pump flows are based on theoretical values
Maximum RPM is dependent upon inlet Hg conditions, not to exceed 5 inHg



Permco 997-01908 In-Cab Air Control Shift Tower independently controls PTO, cylinder function and high/low pressure settings.

Product feature includes, auto kick out to low pressure setting when PTO is disengaged.

Permco 997-01926 offers the same features as above, minus PTO engagement and auto kickout function.

Visual and audible notification when shifted into high-pressure setting.

Remote Mounted Relief Valve

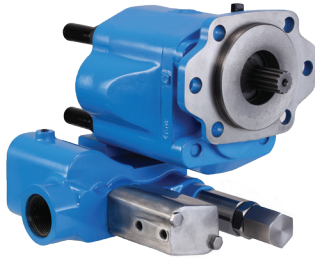


- Permco's remote-mounted Relief Valve AZ5514J-100-25 or AZ5514J-100-32 comes with 1" NPT ports. It is available with either 2500 or 3200 PSI maximum settings, and is field adjustable. It is easily mounted with 3 mounting holes and directly replaces common relief valves currently found from other manufacturers.
- Available in 3/4" and 1" NPT or SAE/ORB ports with either direct acting or pilot-operated relief cartridges
- 46 GPM MAX flow
- Gauge port standard

Maximum RPM is dependent upon inlet Hg conditions, not to exceed 5 inHg

Dump Pump MVP SERIES

Combo Pump/Tipper Valve for Allison 3000/4000 tight fit transmission applications.



- SAE 2/4 bolt B mounting flange, 7/8" 13 T B spline
- Flows up to 49 GPM at 1800 Pump RPM
- Pump and cylinder protected in the "raise" and "neutral" position of the spool
- Air shift only
- SAE/ORB ports are standard
- 3-line for continuous duty systems
- SAE 1" 15 T BB spline or DIN mount available
- Speeds to 2400 RPM
- Pressures to 3000 PSI
- 4 extended studs for bracket support
- 100% Factory Tested
- CW and CCW rotations available

SERIES	IN ³ (CC)	GPM@900 PUMP RPM	GPM@1200 PUMP RPM	GPM@1500 PUMP RPM
MVP-20	5.12 (84.3)	20.0	26.5	33.0
MVP-25	6.40 (105.4)	25.0	33.0	41.5

Pump flows are based on theoretical values
Maximum RPM is dependent upon inlet Hg conditions, not to exceed 5 inHg

Remote Mount Tipping Valve LIL TIPPER II SERIES



- Pressures up to 3200 PSI and flows up to 46 GPM
- Manual shift or factory installed "OE" air with full metering capabilities
- Gemini/Dual Pressure relief valve available, 2500/3200 PSI standard setting. Field adjustable.
- Built-in load check maintains dump body angle and is installed in the cylinder port for superior self-cleaning
- Valve remotely mounts when Dump Pump install space is limited
- SAE/ORB and NPT ports available
- Neutral lock-out safety cap for use with pull-out cable
- 100% Factory Tested

Customer service: 330.626.2801 | support@permco.com

Maximum RPM is dependent upon inlet Hg conditions, not to exceed 5 inHg