

T2

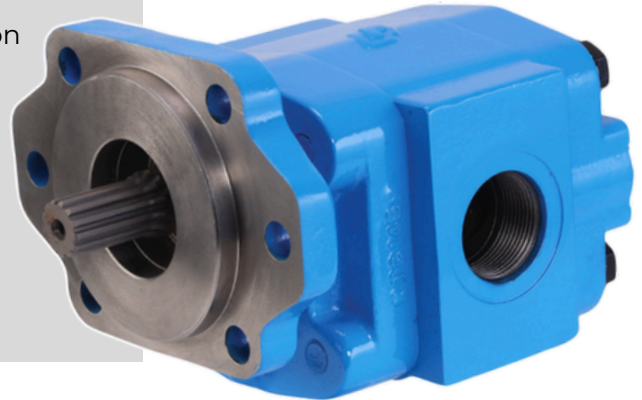
TRUCK PUMP PROGRAM



Hydraulic Pumps and Motors

FEATURES

- Roller bearing design to fit a wide variety of applications
- Doweled and high strength cast iron construction
- Up to **3000 PSI** max pressure
 - **(206.84 bar)**
- Flows from **8-17 GPM**
- SAE B and SAE BB shaft options
- NPT or SAE/ORB porting options
- Bi-rotational options available
- **Side and rear ports** (rear ports plugged from factory)
- Heavy duty SPL1 shaft seal
- Pump Shaft End Cover = **2/4 Bolt SAE B**



SPECIFICATIONS

| GPM SIZE | GEAR SIZE | CUBIC INCHES | B NPT | BB NPT | B SAE/ORB | BB SAE/ORB | MAX PUMP RPM* | MAX PRESSURE |
|----------|-----------|--------------|----------|-----------|-----------|------------|---------------|--------------|
| 8 GPM | 1" | 2.0 | T2NB081B | N/A | T2SB081B | N/A | 2400 | 3000 |
| 11 GPM | 1.25" | 2.5 | T2NB111B | N/A | T2SB111B | N/A | 2400 | 3000 |
| 13 GPM | 1.5" | 3.0 | T2NB131B | T2NB131BB | T2SB131B | T2SB131BB | 2400 | 3000 |
| 15 GPM | 1.75" | 3.5 | T2NB151B | T2NB151BB | T2SB151B | T2SB151BB | 2400 | 2500 |
| 17 GPM | 2" | 4.0 | T2NB171B | T2NB171BB | T2SB171B | T2SB171BB | 2400 | 2500 |

*Maximum RPM is dependent upon inlet Hg conditions, not to exceed 5 inHg

SCAN FOR
INSTALLATION
INFORMATION



T 2 N B 08 1 B

Truck Pump

2100 Series

Port Threads

- N = NPT
- 08 & 11 GPM = 1" NPT side & rear
 - 13, 15, 17 GPM = 1-1/4" NPT side & 1" NPT rear

- S = SAE/ORB
- 08 & 11 GPM = 1" SAE/ORB ports, side & rear
 - 13, 15, 17 GPM = 1-1/4" SAE/ORB side ports, 1" SAE/ORB rear

Porting Location

- B = Side and rear ports

Shaft Sizes

- B = SAE B 7/8" dia. 13 Tooth (all GPM sizes shown)
- BB = SAE BB 1" dia. 15 Tooth (27 & 30 GPM sizes)

Pump Build Type

- Type 1 with outboard bearing provision.
- Bearing and snap ring sold separately

GPM @1000 pump RPM

- 08, 11, 13, 15, 17 GPM (theoretical GPM)

DataSheet__T2T5_Rev5_1/26

1500 Frost Rd. | P.O. Box 2068
Streetsboro, Ohio 44241

330-626-2801
support@permco.com

www.permco.com



T5

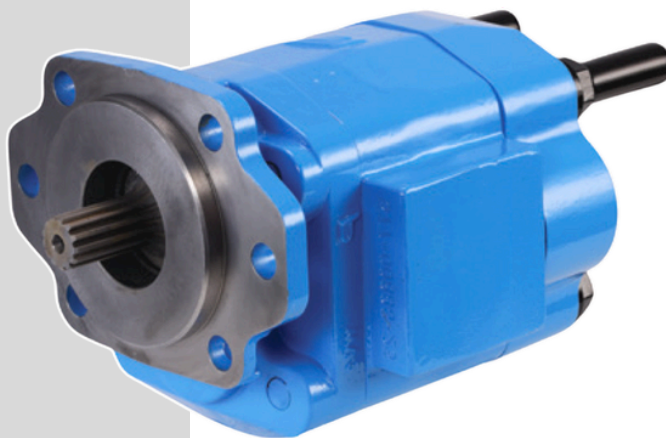
TRUCK PUMP PROGRAM



Hydraulic Pumps and Motors

FEATURES

- Roller bearing design to fit a wide variety of applications
- Doweled and high strength cast iron construction
- **Up to 3000 PSI** max pressure
 - **(206.84 bar)**
- Flows from **19-30 GPM**
- SAE B and SAE BB shaft options
- NPT or SAE/ORB porting options
- Bi-rotational options available
- **Rear ports only**
- Heavy duty SPL1 shaft seal
- Extended fasteners on rear 2 bolts
- Pump Shaft End Cover = **2/4 Bolt SAE B**

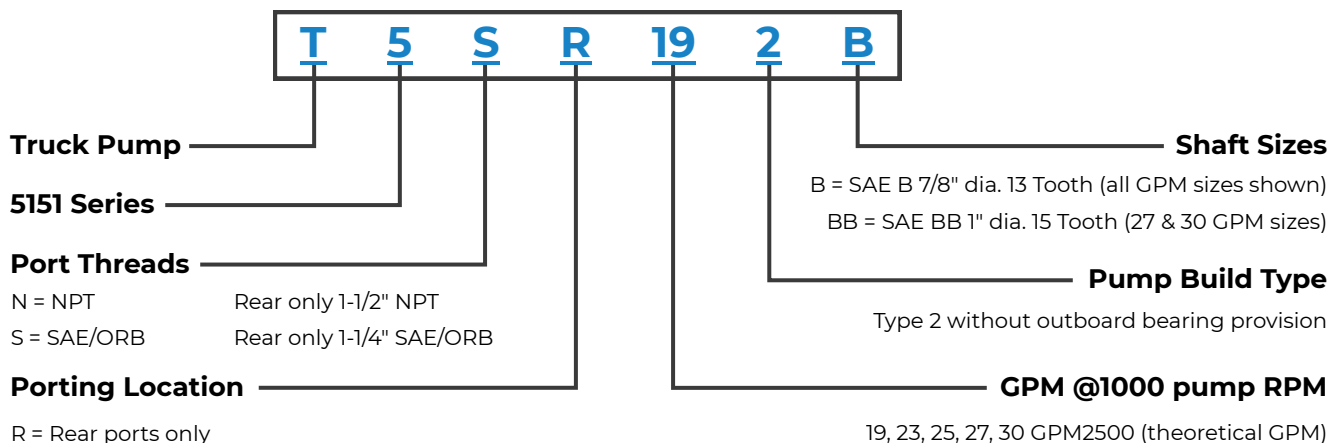


SPECIFICATIONS

| GPM SIZE | GEAR SIZE | CUBIC INCHES | B NPT | BB NPT | B SAE/ORB | BB SAE/ORB | MAX PUMP RPM* | MAX PRESSURE |
|----------|-----------|--------------|----------|-----------|-----------|------------|---------------|--------------|
| 19 GPM | 1.75" | 4.5 | T5NR192B | N/A | T5SR192B | N/A | 3000 | 3000 |
| 23 GPM | 2" | 5.2 | T5NR232B | N/A | T5SR232B | N/A | 3000 | 2500 |
| 25 GPM | 2.25" | 5.8 | T5NR252B | N/A | T5SR252B | N/A | 2500 | 2500 |
| 27 GPM | 2.5" | 6.4 | T5NR272B | T5NR272BB | T5SR272B | T5SR272BB | 2500 | 2500 |
| 30 GPM | 2.75" | 7.1 | T5NR302B | T5NR302BB | N/A | N/A | 2500 | 2000 |

*Maximum RPM is dependent upon inlet Hg conditions, not to exceed 5 inHg

SCAN FOR
INSTALLATION
INFORMATION



DataSheet__T2T5_Rev5_1/26

1500 Frost Rd. | P.O. Box 2068
Streetsboro, Ohio 44241

330-626-2801
support@permco.com

www.permco.com

