

T2

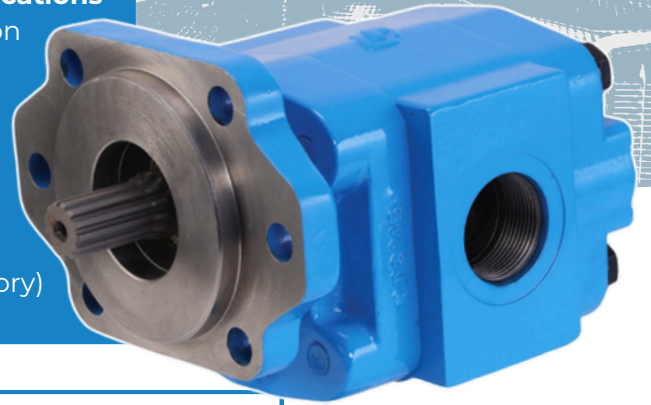
TRUCK PUMP PROGRAM

PERMCO

Hydraulic Pumps and Motors

FEATURES

- Roller bearing design to fit a **wide variety of applications**
- **Doweled** and **high strength cast iron** construction
- Up to **3000 PSI** max pressure
 - (206.84 bar)
- Flows from **8-17 GPM**
- **SAE B** and **SAE BB** shaft options
- **NPT** or **SAE/ORB** porting options
- Bi-rotational options available
- **Side and rear ports** (rear ports plugged from factory)
- Heavy duty SPL1 shaft seal



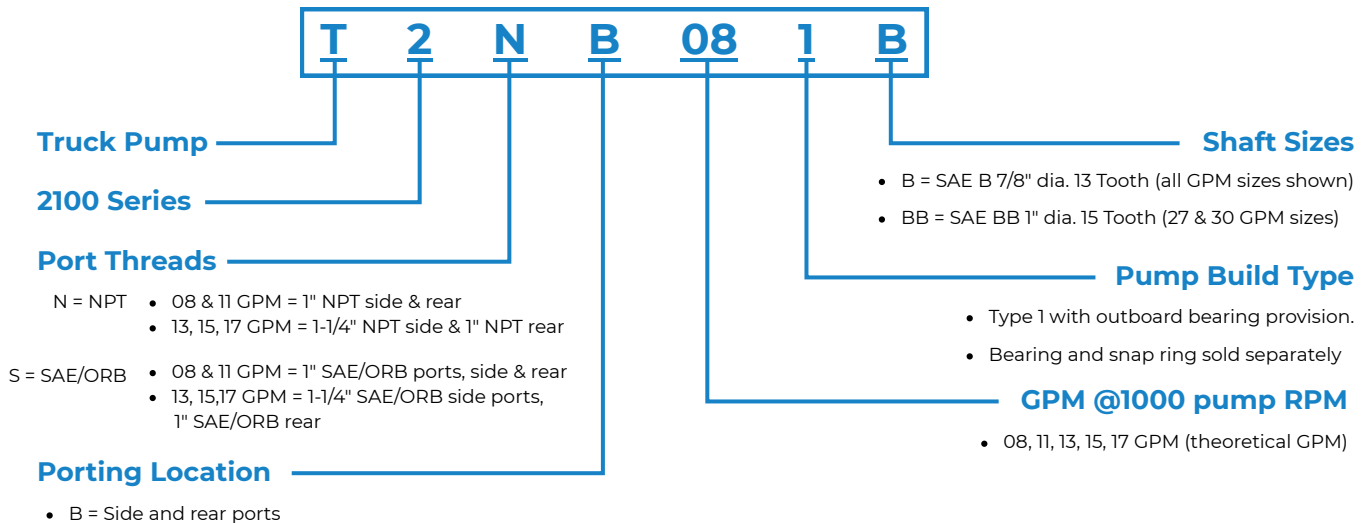
SPECIFICATIONS

GPM SIZE	GEAR SIZE	CUBIC INCHES	B NPT	BB NPT	B SAE/ORB	BB SAE/ORB	MAX PUMP RPM*	MAX PRESSURE
8 GPM	1"	2.0	T2NB081B	N/A	T2SB081B	N/A	2400	3000
11 GPM	1.25"	2.5	T2NB111B	N/A	T2SB111B	N/A	2400	3000
13 GPM	1.5"	3.0	T2NB131B	N/A	T2SB131B	T2SB131BB	2400	3000
15 GPM	1.75"	3.5	T2NB151B	T5NR272BB	T2SB151B	T2SB151BB	2400	2500
17 GPM	2"	4.0	T2NB171B	T5NR302BB	T2SB171B	T2SB171BB	2400	2500

SCAN FOR
INSTALLATION
INFORMATION



*Maximum RPM is dependent upon inlet Hg conditions, not to exceed 5 inHg



DataSheet__T2T5_Rev1_12/25

1500 Frost Rd. | P.O. Box 2068
Streetsboro, Ohio 44241

330-626-2801
support@permco.com

www.permco.com



T5

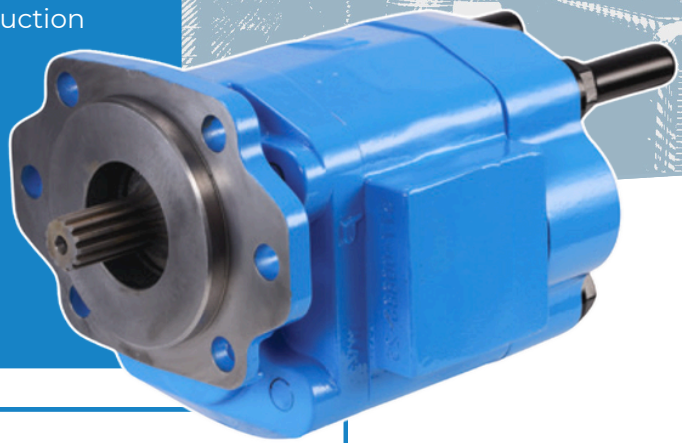
TRUCK PUMP PROGRAM

PERMCO

Hydraulic Pumps and Motors

FEATURES

- Roller bearing design to fit a **wide variety of applications**
- **Doweled** and **high strength cast iron** construction
- Up to **3000 PSI** max pressure
 - (206.84 bar)
- Flows from **19-30 GPM**
- **SAE B** and **SAE BB** shaft options
- **NPT** or **SAE/ORB** porting options
- Bi-rotational options available
- **Rear ports only**
- Heavy duty SPL1 shaft seal
- Extended fasteners on rear 2 bolts

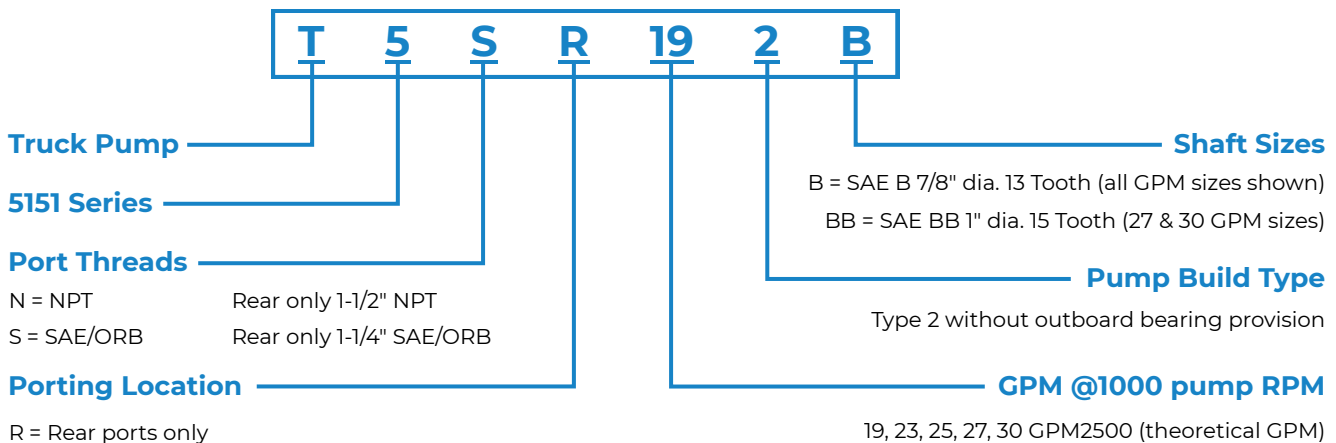


SPECIFICATIONS

GPM SIZE	GEAR SIZE	CUBIC INCHES	B NPT	BB NPT	B SAE/ORB	BB SAE/ORB	MAX PUMP RPM*	MAX PRESSURE
19 GPM	1.75"	4.5	T5NR192B	N/A	T5SR192B	N/A	3000	3000
23 GPM	2"	5.2	T5NR232B	N/A	T5SR232B	N/A	3000	2500
25 GPM	2.25"	5.8	T5NR252B	N/A	T5SR252B	N/A	2500	2500
27 GPM	2.5"	6.4	T5NR272B	T5NR272BB	T5SR272B	T5SR272BB	2500	2500
30 GPM	2.75"	7.1	T5NR302B	T5NR302BB	N/A	N/A	2500	2000

*Maximum RPM is dependent upon inlet Hg conditions, not to exceed 5 inHg

SCAN FOR
INSTALLATION
INFORMATION



DataSheet__T2T5_Rev1_12/25

1500 Frost Rd. | P.O. Box 2068
Streetsboro, Ohio 44241

330-626-2801
support@permco.com

www.permco.com

