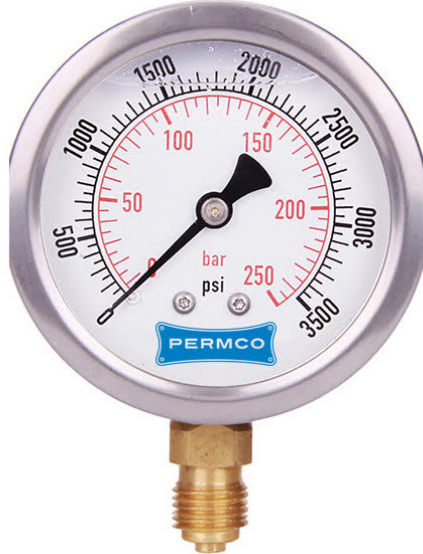
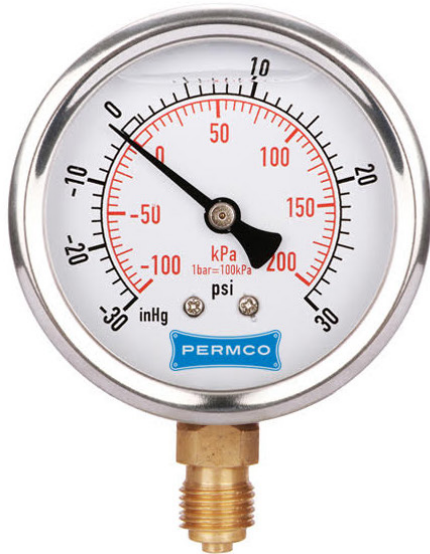


Diagnostic Accessory

Pressure Gauge Kit

Precision-Engineered Fluid Power Products



Features

- Glycerin filled gauges
- 6 different process connection test points
- 2 durable test hoses, 1 meter in length
- Working pressure: 630bar/9000psi
- Large clear easy to read dials
- Robust and precise pressure gauges in 3 ranges:
 - 30inHg - 30psi,
 - 0-3500psi,
 - 0-6000psi
- Accuracy: +/- 1.6%
- Durable poly padded suitcase, portable, reliable

Permco's Hydraulic Pressure Gauge Kit includes: 3 - Pressure Gauges, 2 - Test Hoses, 6 - Test Couplings, 1 - Durable poly case.

Glycerin filled, 2-1/2" x 1/4"NPT, 304 stainless steel robust case and crimped ring, shock resistant polycarbonate window, brass movement and connection, copper tube, aluminum dial plate and pointer, gray oil cap, IP67, Accuracy: +/- 1.6%,

Hose made of resin, working pressure: 630bar/9000psi
M16 x 2 female x 1/4"NPT female
6 Test points

One side M16 x 2 male, another size:
1/8"NPT, 1/4"NPT, 7/16-20 UNF,
9/16-20 UNF male

