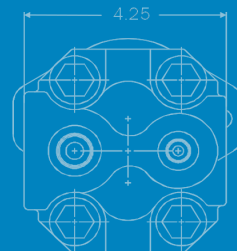
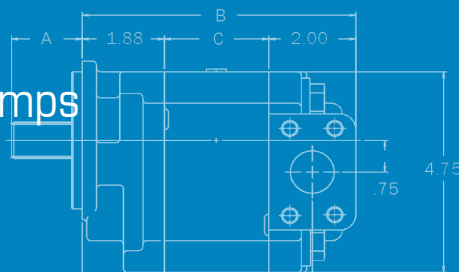


Small Displacement Sleeve Bushing Pumps

124 SERIES

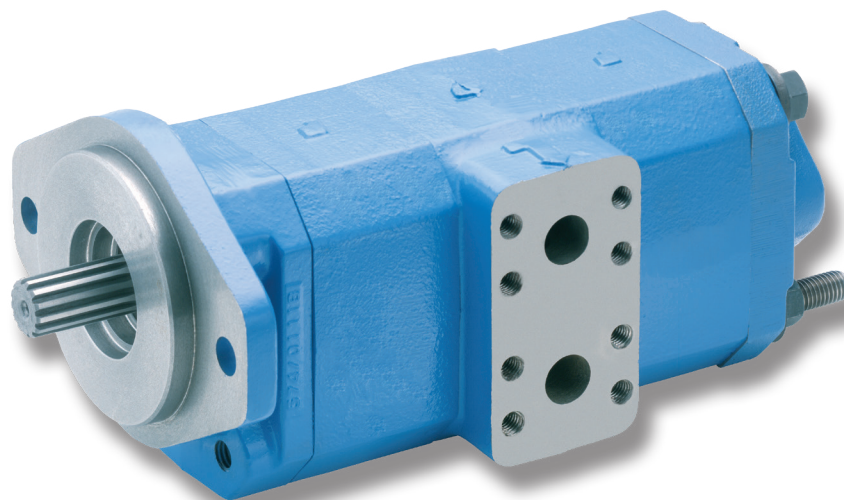
Precision-Engineered Fluid Power Products



The Sensible Choice for Pumps & Motors

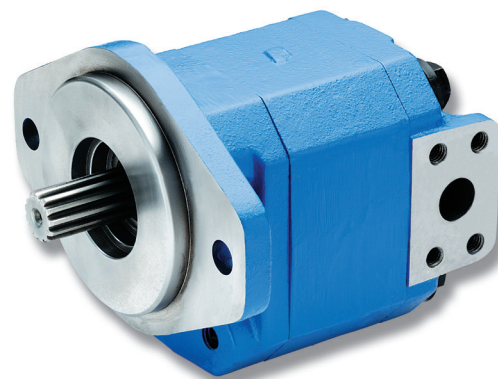


Car Haulers
Crane Equipment
Vehicles
Roll Off Trucks
Refuse Collection
Snow Plows &
Spreaders



Features

- Heavy duty sleeve bushing design in a small frame size
- Working pressure up to 3500 PSI
- Cubic inch displacements from 0.62 through 2.48
- Speeds up to 3000 RPM
- Flows up to 30 GPM
- Doweled and high strength cast iron construction
- High strength alloy steel gear and shaft sets
- NPT, ORB, Split ports are available
- Pressure balanced wear plates maintain high pump efficiency throughout all operating ranges
- Both single inlet/single outlets and single inlet/dual outlet bearing carriers
- 100% factory tested
- Available as a clutch pump
- Available as a fan motor
- High pressure 424 version available in select sizes

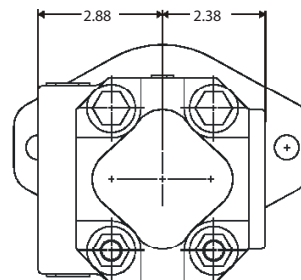
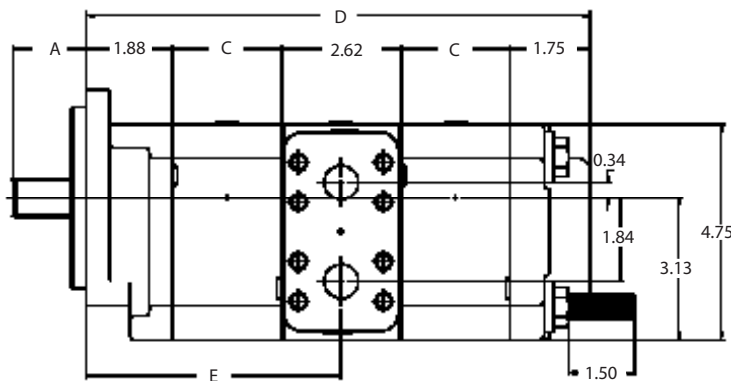
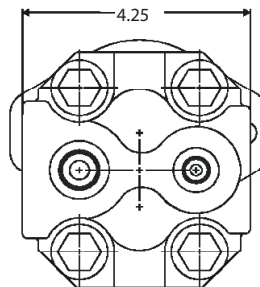
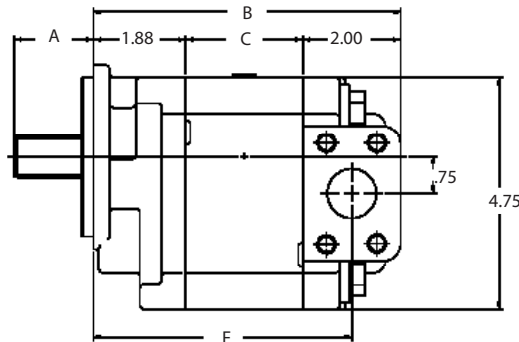




Pumps & Motors

Dimensional Data (inches)

- A. 1.63" SAE "B" shaft shown, other shafts available
- B. 4.27" plus gear width
- C. 0.4" plus gear width
- D. 7.04 plus total gear width
- E. 3.58" plus front gear width
- F. 3.27" plus gear width



Product Information

Pump / Motor

Gear Size	Displ Cu. In	Theo. GPM 1000 RPM	Max RPM	Max PSI
0.50	0.62	2.7	3000	3500
0.75	0.93	4.0	3000	3500
1.00	1.24	5.4	3000	3500
1.25	1.55	6.7	3000	3500
1.50	1.88	8.1	3000	3250
1.75	2.17	9.4	3000	2900
2.00	2.48	10.7	3000	2500

* Maximum Inlet Vacuum 5 In. Hg.



Perenco is a leading manufacturer of high-pressure hydraulic gear/vane pumps and motors, flow dividers, intensifiers, and accessories. Available in a wide variety of sizes and configurations to suit your application needs.

Our Online Support is available
24/7/365 for your needs!

Email: support@permco.com

Call: (800) 626.2801



Perenco USA | 1500 Frost Road | P. O. Box 2068 | Streetsboro, Ohio 44241



NAPA
Solutions through
motion technology

