

Heavy & Medium Duty Trucks & Trailers

Gemini Pneumatic Control Tower

Precision-Engineered Fluid Power Products

The Sensible Choice for Pump/Valve Assembly



Used with Permco's Gemini pump on a range of applications:

Dump Trucks

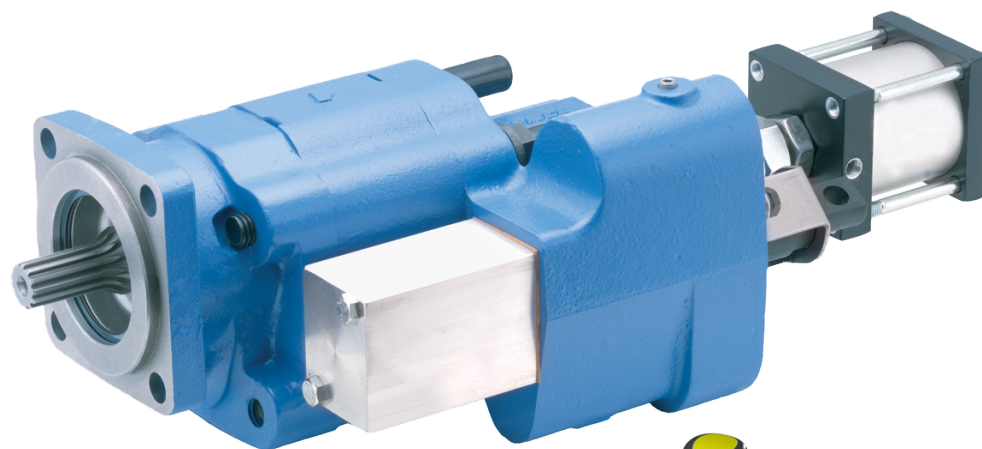
Dump Trailers

Cranes

Roll off Trucks

Refuse Collection

Walking Floor



Features

- Designed to integrate with Permco's Gemini pump.
- Control the pressure level.
- A unique combination of spring return action with detent positioning and lock handle allow operator to take advantage of feathering features when needed and lock in position when necessary.
- Labeled connection bulkheads at the bottom allow easy access to all pneumatic connections in one easily accessed spot.
- PTO Enable switch requires a two-step movement to prevent accidental activation.
- Small compact Buzzer/LED light will be active while in high pressure mode.
- LED light to indicate when PTO is activated.



PERMCO



Control Towers



All Pneumatic connections in one easy to access place and with labels.



Mechanical linkage forces the PTO switch into off position when Joystick is moved into lowering position detent.



Permco is a leading manufacturer of high-pressure hydraulic gear/vane pumps and motors, flow dividers, intensifiers, and accessories. Available in a wide variety of sizes and configurations to suit your application needs.

Product Information

- **Part Number:** 997-01908
- **Functions:**
 - Pneumatic Hoist Control Joystick
 - Pneumatic PTO Activation Switch
 - PTO Status LED
 - High Pressure Status LED
 - High Pressure Status Buzzer

**Our Online Support is available
24/7/365 for your needs!**

Email: support@permco.com

Call: (800) 626.2801



Permco USA | 1500 Frost Road | P. O. Box 2068 | Streetsboro, Ohio 44241



NFPA
Solutions through
motion technology

