



Refuse Systems

EVO PRODUCTS

- Rust Resistant coated; no need for paint.
- Bi-rotation; simplifying field adjustment
- Longevity and reliability; trouble free operation
- Compatible and interchangeable with most major manufacturers
- Highest quality material available globally.

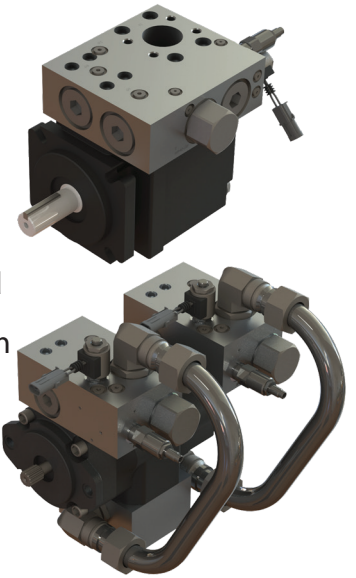
GEAR PRODUCTS

- Heavy duty roller and sleeve bearings designs
- Pressures up to 4500 PSI
- Doweled and high strength cast iron construction
- Wide range of porting, mounting, and shaft options
- Pressure balanced wear plates for high pump efficiency
- Unloader, dry valve, speed sensor and electronic control options available

Based on Permco's EVO PT7DSW vane pumps, the **M001 System** provides operators the ability to collect and pack at any engine speed while the function speeds remain constant. This feature makes the Permco EVO-Lution M001 Refuse System ideal for refuse trucks that operate while moving from a location to next.

The **M002 System** allows the operator to collect and pack quietly at engine idle during early hours of the morning. This feature makes the M002 Refuse System ideal for residential neighborhoods and such; where the noise level is a big concern.

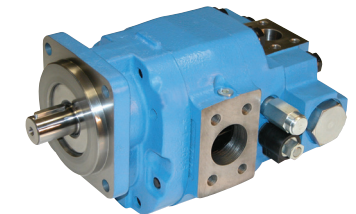
The **M001 and M002 Systems** offer a high level of flow at low RPM while the truck is at rest. When the driver starts to move the truck, the pump's flow is automatically unloaded back to the pump's inlet at a very low pressure drop.



The Versa-Pak Flow Control/Unloader System allows a preset amount of flow to the hydraulic system with the excess flow being returned to tank; this function protects the system's main relief valve from being flooded. In addition, the priority type pressure compensated flow control minimizes heat generation by returning unused oil back to tank at only a few hundred PSI more than system pressure.

The Versa-Pak Unloading System limits the flow to the system while in use to prevent hydraulic overspeeding. While in the off mode the flow is diverted back to the tank at low pressures to control horsepower losses. Available with optional speed sensor and digital speed controller to further protect the hydraulic system.

The Versa-Pak Dry Valve System incorporates an air operated dry valve which permits hydraulic operation while the vehicle is in motion. It reduces fuel consumption during the off mode and eliminates heat build-up associated with "live" systems in the on mode. Available with optional speed sensor and digital speed controller to further protect the hydraulic system.

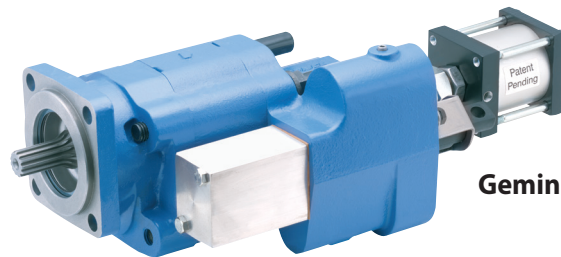


Dual-Use Pumps

Gemini Refuse Dual Use Pump Features:

Designed to be used with dual use system applications, typically a dump trailer and/or a live floor or goose neck trailer

- Dual pressure relief valve: low for dump trailer, high for other applications, each field adjustable
- Direct mount SAE-B-4 bolt or twin shafted remote mount with mounting bracket



Gemini

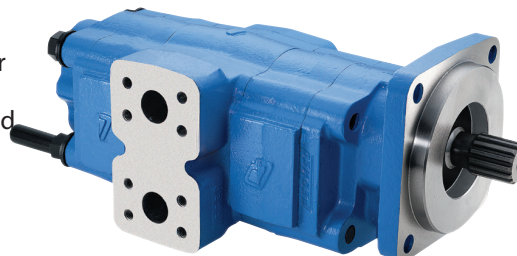
The 997-01444 air tower controls the pump/valve, PTO, cylinder, and the high/low pressure setting on the relief valve for the dual pressure refuse system. Safety features include auto kickout to low pressure when PTO is disengaged and optional safety latch PTO switch with auto kickout in lower position. Other tower options available: consult factory.



PEK/2100 and PEL/5151

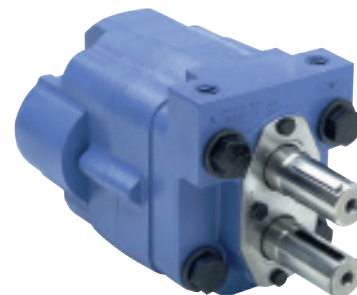
The PEK/2100 and PEL/5151 Series fits a variety of applications in the refuse industry, designed with both side and rear ports, SAE-B 2&4 bolt mounting flange, Bi-Rotation and setup for use as a pump or motor providing versatility for uses in many application. Commonly seen in refuse roll-off, live floor, small and large rear loaders, recovery vehicles, container haulers and many other utility type vehicle applications.

Permco Bushing Series in our 257 and 360 series are becoming more popular in the refuse market; bushing units typically have higher pressure ratings and longer life. Many are used today on front and rear loaders and also on automated side loader applications. Typically these are used in unloader applications where manifolds equipped with solenoids turn the system on and off.



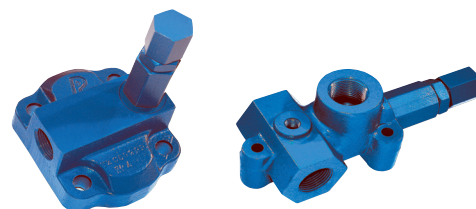
Permco Bushing Series

The CH-640 and CH-512 Series pumps have been specifically designed for the refuse truck market. The CH Series pumps are made of high strength cast iron and alloy steel incorporating Permco's rugged and dependable gear pump design. CH pumps are pad mounted with double 1-1/8 inch drive shafts and large port end cover with 1-1/2 inch NPT inlets and a choice of 3/4 inch or 1 inch O-ring outlets.



CH-640 and CH-512

Permco's remote mounted Relief Valve AZ5514J-100-25 or AZ5514J-100-32 comes with 1" NPT ports. It is available with either 2500 or 3200 PSI maximum settings, and is field adjustable. It is easily mounted with 3 mounting holes and directly replaces common relief valves currently found from other manufacturers. Available in 3/4" and 1" NPT ports; 3/4" and 1" O-ring ports and available with optional pilot operated relief cartridges.



Port End Covers Relief Valve

Permco offers Port End Covers P3000, P3100, P5000 and P5100, pump series which incorporate a built-in relief valve. Pressure settings are factory set with ranges from 500 to 3200 PSI. Settings are field adjustable. The tank port on the P3000 and P3100 are either internally or externally exhausted. The P5000 and P5100 are externally exhausted only.



1500 Frost Rd.
P.O. Box 2068
Streetsboro, OH 44262

330.626.2801
support@permco.com
permco.com