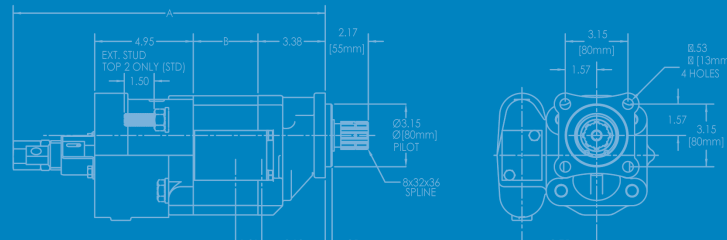


Heavy & Medium Duty Trucks & Trailers

# DUMP PUMPS

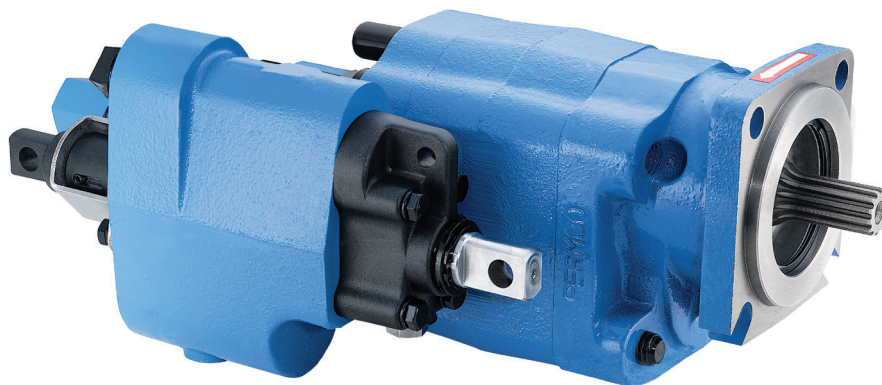


Precision-Engineered Fluid Power Products

## The Sensible Choice for Pump/Valve Assembly



Dump Trucks  
Dump Trailers



### Features

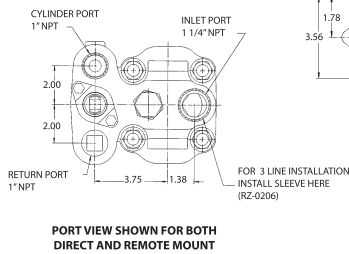
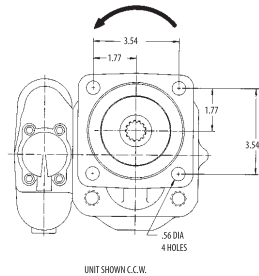
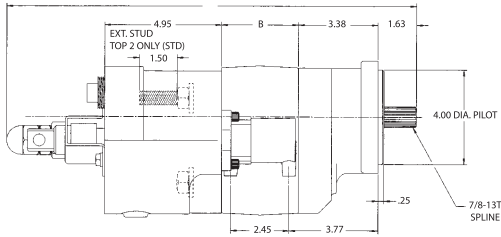
- Pump and cylinder protected in the "Raise" and "Neutral" position of the spool
- Manual shift, factory installed "OE" air, or "Add-on" air shifts each with full metering capabilities
- Built-in load check maintains dump body angle and is installed in the cylinder port for superior self-cleaning
- NPT & SAE ports are available
- Built-in direct acting relief valve set at factory
- 100% factory tested
- Flows of 37 and 46 GPM at 1800 RPM
- Pressures to 2500 PSI
- Speeds to 2400 RPM
- High strength alloy steel gear and shaft set
- Neutral lock-out safety cap for use with pull-out cable
- 2 line for intermittent duty or 3 line for continuous duty systems
- 2 extra long studs for easy installation of pump support bracket on direct mount
- Pressure balanced wear plates maintain high pump efficiency throughout all operating ranges
- DIN mount and shaft available



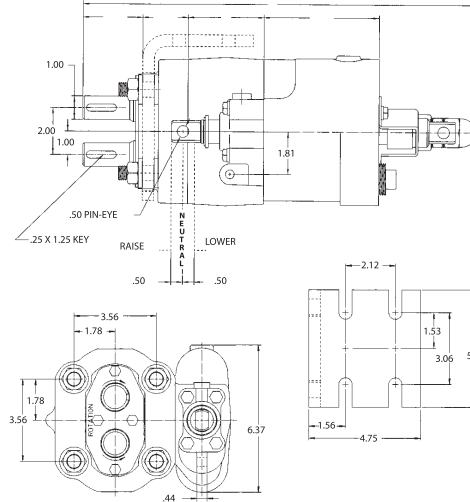


# Pump/Valve Assembly

## Dimensional Data (inches)



	A	B
DMD-20	16.85"	2.75"
DMD-25	17.35"	3.25"



	C	B
DM-512-20	16.35"	2.75"
DM-640-25	16.85"	3.25"



Permco is a leading manufacturer of high-pressure hydraulic gear/vane pumps and motors, flow dividers, intensifiers, and accessories. Available in a wide variety of sizes and configurations to suit your application needs.

**Dump Pumps are not recommended for ejector, conveyor, or moving floor type applications; please refer to Gemini brochure for those type or applications**

## Pump Code

### DMD - 25 - Z - L - AS - 20 - EB

Direct Mount, SAE 4 Bolt "B"

**20** 2.0" Gear / 37 GPM at 1800 RPM  
**25** 2.5" Gear / 46 GPM at 1800 RPM

**X** 2 Line (Without 3 Line Sleeve)  
**Z** 3 Line (With 3 Line Sleeve)

**L** Left Hand Rotation  
**R** Right Hand Rotation

Extended Stud Orientation

**Delete** Top Two (Std.)  
**EB** Bottom Two  
**EL** Left Side  
**ER** Right Side  
**E4** All four

Relief Valve Setting  
**20** 2000 PSI  
**25** 2500 PSI

**AS** Air Shift  
**MS** Manual Shift

### DM - 25 - ZR - M - T - 200

Remote Mount

**20** In.<sup>3</sup> x 100 / 2.0" Gear / 37 GPM at 1800 RPM  
**25** In.<sup>3</sup> x 100 / 2.5" Gear / 46 GPM at 1800 RPM

**X** 2 Line (Without 3 Line Sleeve)  
**Z** 3 Line (With 3 Line Sleeve)

Valve Orientation  
**L** Left Side  
**R** Right Side (Std.)

Relief Valve Setting  
**200** 2000 PSI  
**250** 2500 PSI

**T** Manual Shift  
**AS** "OE" Air Shift

**M** With Mounting Bracket (Std.)  
**O** Without Mounting Bracket

**Our Online Support is available 24/7/365 for your needs!**

**Email: support@permco.com**

**Call: (800) 626.2801**



Permco USA | 1500 Frost Road | P. O. Box 2068 | Streetsboro, Ohio 44241

