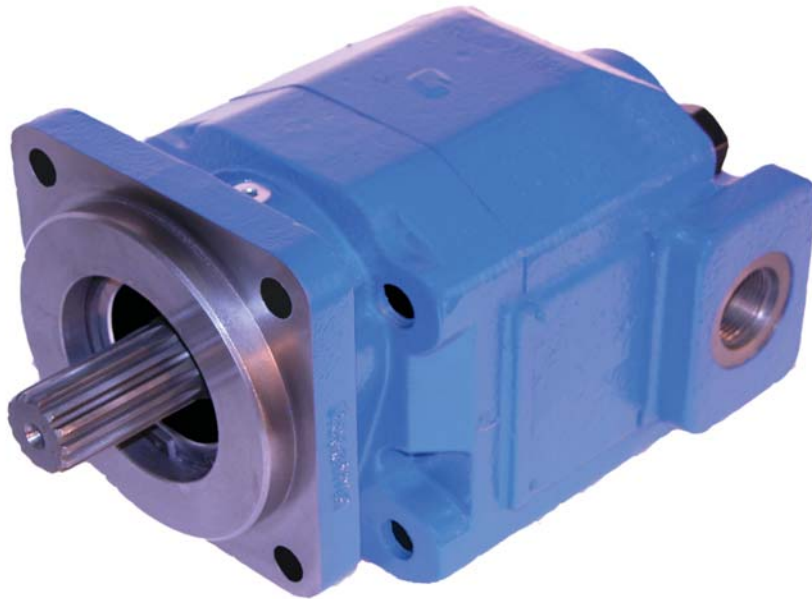


# PERMCO

# M360

## **M360 MOTORS**

### **LARGE DISPLACEMENT SLEEVE BUSHING MOTORS**



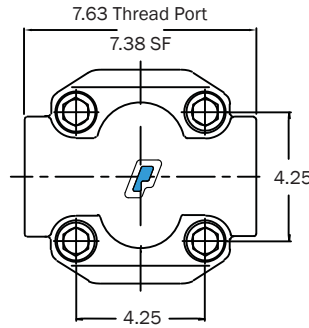
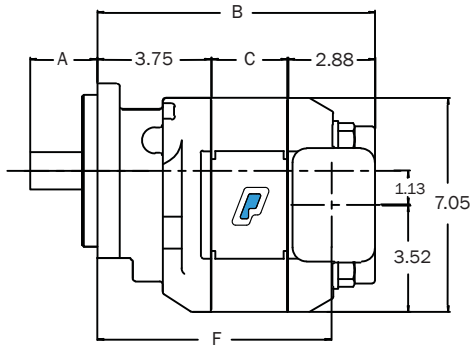
#### **FEATURES**

- Heavy duty sleeve bushing design in a small frame size
- Cubic inch displacement from 1.80 through 9.00 (29.5 - 147.5 CC)
- Working pressure up to 3500 PSI (241 BAR)
- Speeds up to 2400 RPM
- Torque up to 4114 in-lbs (468 Nm)
- Doweled and high strength cast iron construction
- 100% factory tested
- High strength alloy steel gear and shaft sets
- Pressure balanced wear plates maintain high pump efficiency throughout all operating ranges
- Available in single or tandem units

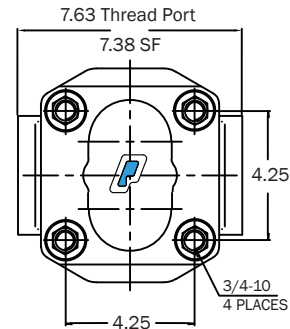
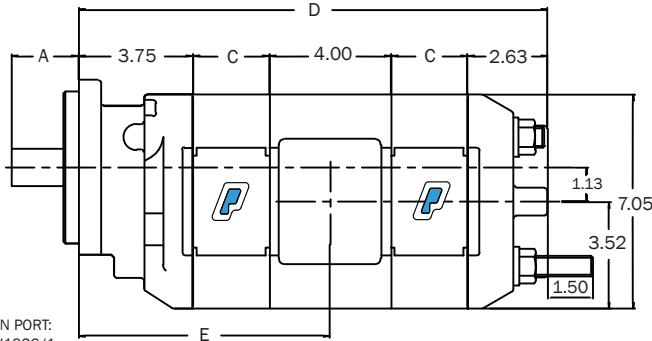


## *The Sensible Choice*

# 360 DIMENSIONAL DATA (in)



- A. 2.19" SAE "C" shaft shown, other shafts available
- B. 7.13" plus gear width
- C. 0.50" plus gear width
- D. 11.38" plus total gear width
- E. 6.25" plus front gear width
- F. 5.81" plus gear width



DRAIN PORT:  
SAE J1926/1  
7/16-20

## M360 Performance Data @ Rated Pressure

Speed (rpm)	Gear Width													
	1.000		1.250		1.500		1.750		2.000		2.250		2.500	
	Flow (gpm)	Torque (in-lb)	Flow (gpm)	Torque (in-lb)	Flow (gpm)	Torque (in-lb)	Flow (gpm)	Torque (in-lb)	Flow (gpm)	Torque (in-lb)	Flow (gpm)	Torque (in-lb)	Flow (gpm)	Torque (in-lb)
900	18.5	1907	22.2	2393	26.0	2879	30.2	3365	34.4	3850	37.7	3982	40.9	4114
1200	23.3	1918	28.1	2398	33.0	2879	38.5	3361	44.1	3843	48.4	3970	52.7	4097
1500	27.9	1910	34.1	2385	40.2	2861	46.9	3339	53.6	3817	59.1	3935	64.5	4053
1800	32.7	1901	40.1	2377	47.5	2853	55.4	3321	63.3	3789	70.0	3900	76.8	4011
2100	37.6	1890	46.1	2362	54.6	2834	63.6	3294	72.6	3753	80.7	3867	88.8	3981
2400	42.5	1881	52.3	2349	62.0	2817	72.2	3274	82.3	3731	91.7	3848	101.1	3964

## M360 Performance Data @ 2000 PSI

Speed (rpm)	Gear Width													
	1.000		1.250		1.500		1.750		2.000		2.250		2.500	
	Flow (gpm)	Torque (in-lb)	Flow (gpm)	Torque (in-lb)	Flow (gpm)	Torque (in-lb)	Flow (gpm)	Torque (in-lb)	Flow (gpm)	Torque (in-lb)	Flow (gpm)	Torque (in-lb)	Flow (gpm)	Torque (in-lb)
900	17.1	1069	20.5	1345	24.0	1620	27.9	1900	31.9	2180	35.5	2456	39.2	2733
1200	21.8	1070	26.7	1351	31.5	1631	36.5	1900	41.6	2169	46.3	2438	51.1	2708
1500	26.5	1064	32.6	1341	38.7	1617	44.9	1878	51.0	2140	56.9	2403	62.8	2667
1800	31.4	1059	38.5	1324	45.6	1589	53.2	1854	60.7	2119	67.9	2373	75.0	2627
2100	36.1	1047	44.5	1312	52.8	1576	61.5	1823	70.2	2069	78.6	2327	86.9	2585
2400	40.9	1032	50.6	1299	60.3	1567	70.1	1805	79.9	2042	89.4	2290	98.9	2538

Performance data given is based on a series of test with ISO 32 Oil @ 120°F and is not representative of any one unit.

Permco  
1500 Frost Rd.  
P. O. Box 2068  
Streetsboro, OH 44241

Phone: 330-626-2801  
Fax: 330-626-2805  
e-mail: info@permco.com  
www.permco.com

Permco (TianJin) Hydraulics Inc., Ltd.  
236 Jinbindadao Free Trade Zone  
TianJin Port, China  
e-mail: technic@permcotj.com  
www.permcotj.com

Permco TianJin Fluidpower Mfg.  
Fenghua Industrial Park  
9th Avenue  
TEDA, China 300457