



TECHNICAL SPECIFICATIONS



PT6D SERIES

Medium to large displacement vane pump



PUMP OPERATING CHARACTERISTICS CHART

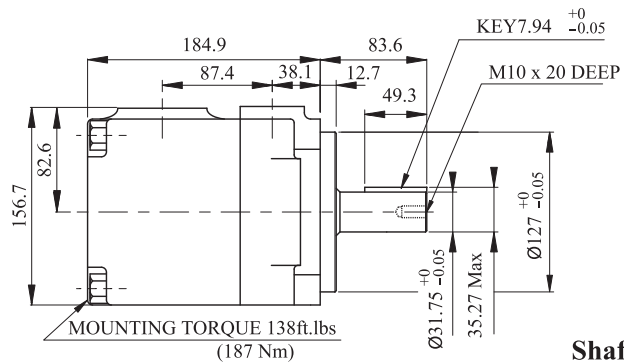
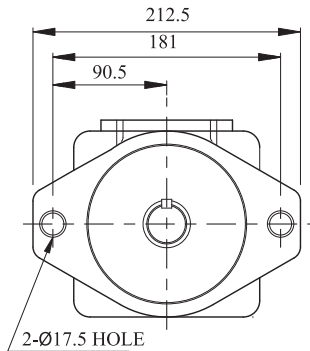
	Cam Ring											
	B14 014	B17 017	B20 020	B24 024	B28 028	B31 031	B35 035	B38 038	B42 042	B45 045	B50 050	
GPM @ 1200 RPM <i>0 PSI</i>	14	17	20	24	28	31	35	38	42	45	50	
GPM @ 1000 RPM <i>3500 PSI</i>	8.48	12.63	13.34	16.91	19.6	21.87	25.23	27.69	31.83	34.4	38.3	
LPM @ 1000 RPM <i>241 BAR</i>	32.1	47.8	50.5	64	74.2	82.8	95.5	104.8	120.5	130.2	145	
IN³	2.9	3.55	4.03	4.85	5.47	6	6.77	7.34	8.3	8.89	9.64	
CC	47.6	58.2	66	79.5	89.7	98.3	111	120.3	136	145.77	158	
Max PSI	3500										3000	
Continuous PSI	3000										2300	
MAX RPM	2500								2200			
MIN RPM	600/400											

*Performance stated at Max RPM and Max PSI for given cam ring.

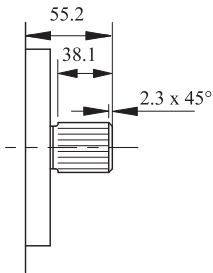
SPECIFICATIONS

Series	Type	Frame Size	Displacement	Max RPM	GPM @ 1000RPM	Max PSI
PT6D	Vane	Medium to Large	2.81-9.64	2500	20-50	4060

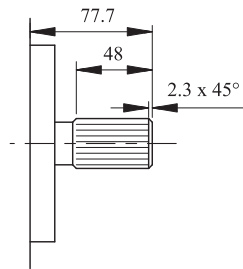
DIMENSIONAL DATA



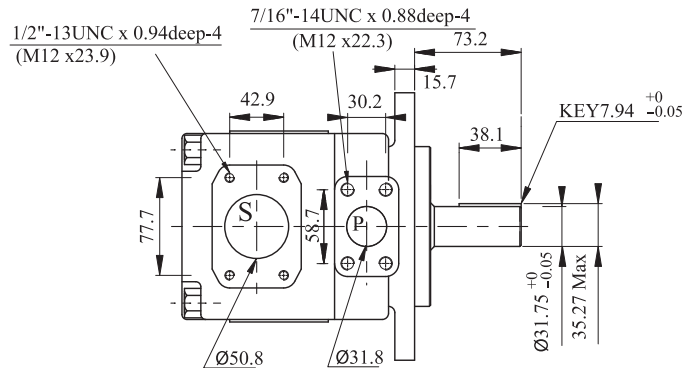
Shaft Code 1
(Keyed SAE C)



Shaft code 3
SAE C splined shaft
Class 1 - J498b
12/24 dp. -14 teeth
30° pressure angle
Flat root side fit.



Shaft code 4
no SAE splined shaft
Class 1 - J498b
12/24 dp. -14 teeth
30° pressure angle
Flat root side fit.
(SAE C spec long)



Shaft Code 2
(Keyed no SAE)

Shaft torque limits in ³ /rev x psi (cm ³ /rev x bar)		
Pump	Shaft	V _p x p max
PT6D	1	38299 (43283)
	2	30638 (34590)
	3	54207 (61200)
	4	54207 (61200)

DISCLAIMER Consult your Permco Representative or the factory for operation below 600 or above 2400 RPM and temperatures above 180° F. Consult Permco for all pressure applications over 4350 PSI. Oil Viscosity: 150 SUS (32.1 cSt.) at 100° F (37.8° C) | Oil Temperature: 150° F (65.5° C)



1500 Frost Road P.O. Box 2068
Streetsboro, Ohio 44241
Phone 330.626.2801 • Fax 330.626.2805

support@permco.com • www.permco.com
twitter: @permco
facebook: www.facebook.com/permco