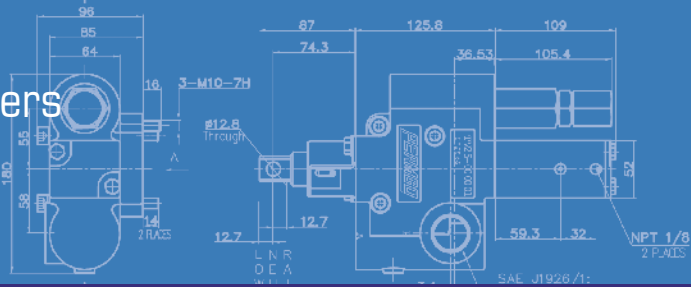


Heavy & Medium Duty Dump Trucks & Trailers

LIL TIPPER II

ORB



Precision-Engineered Fluid Power Products

The Sensible Choice for Pumps



Dump Trucks
Walking Floor



Standard relief

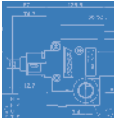
Features

- Pump and cylinder protected in the "Raise" and "Neutral" position of the spool
- Manual shift, factory installed "OE" air, or "Add-on" air shifts each with full metering capabilities
- Gemini/ Dual Pressure relief valve available
- Pressures up to 3200 psi and flows up to 46 GPM
- Built-in load check maintains dump body angle and is installed in the cylinder port for superior self-cleaning
- Built-in direct acting relief valve set at factory
- Neutral lock-out safety cap for use with pull-out cable
- Valve is remotely mounted when space around PTO is limited
- Dedicated return line protects the pump from excessive heat
- 100% factory tested
- SAE and NPT ports available



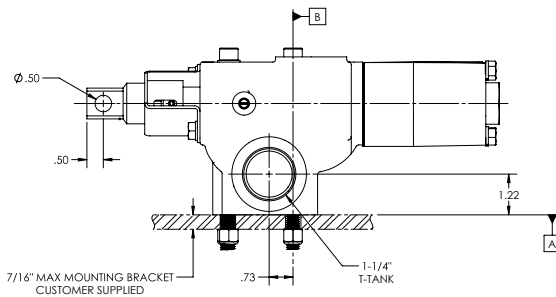
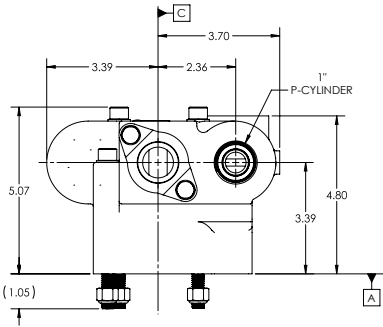
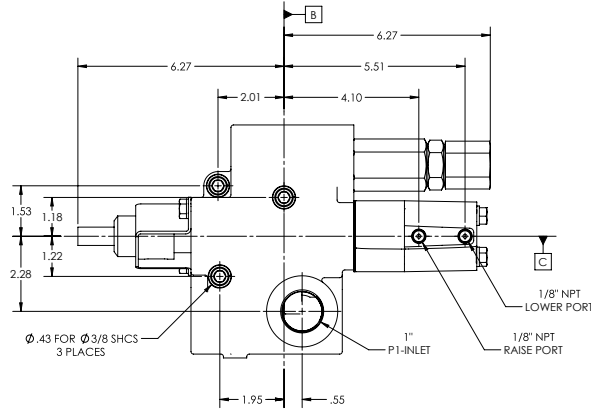
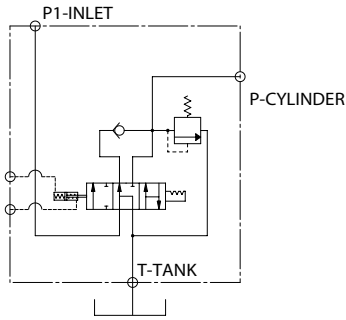
Dual Pressure
relief





Dimensional Data (inches)

AIR SHIFT



P	Outlet (to cylinder)
P1	Inlet (from pump)
T	Tank Line (Return to Tank)



Permco is a leading manufacturer of high-pressure hydraulic gear/vane pumps and motors, flow dividers, intensifiers, and accessories. Available in a wide variety of sizes and configurations to suit your application needs.

Lil Tipper Code

Tipping Valve	TV2 - ORB - A - 1 - **	Pressure Setting 20 2000 psi 25 2500 psi 30 3000 psi Blank Gemini
NPT - Ports ORB - Ports A Air Shift M Manual Shift		

*Customer must provide both lower and higher pressure relief settings.

Our Online Support is available
24/7/365 for your needs!
Email: support@permco.com
Call: (800) 626.2801



www.permco.com

