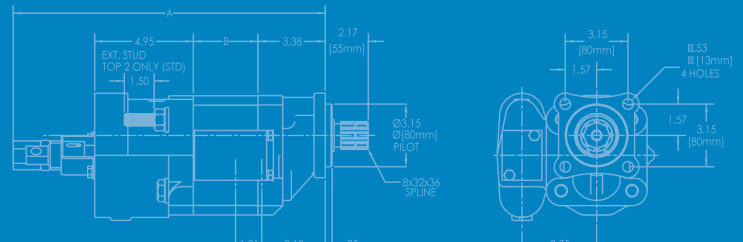


Light & Medium Duty Trucks & Trailers

DUMP PUMPS

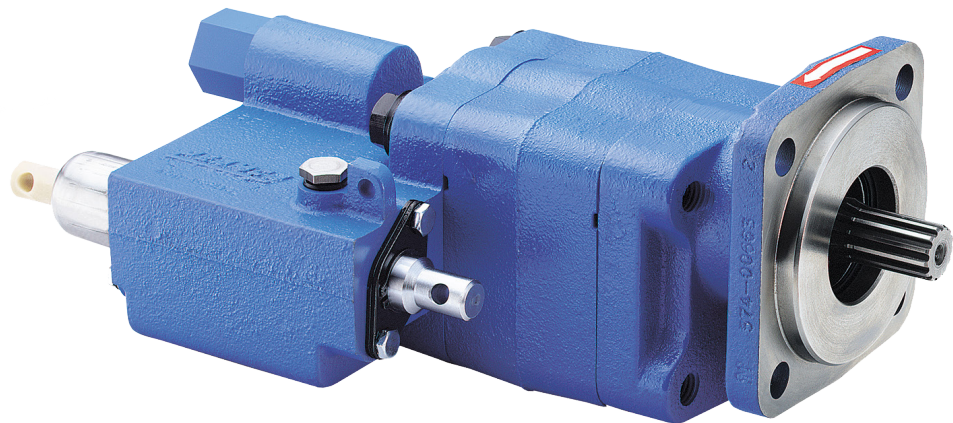


Precision-Engineered Fluid Power Products

The Sensible Choice for Pump/Valve Assembly



Dump Trucks
Dump Trailers



Features

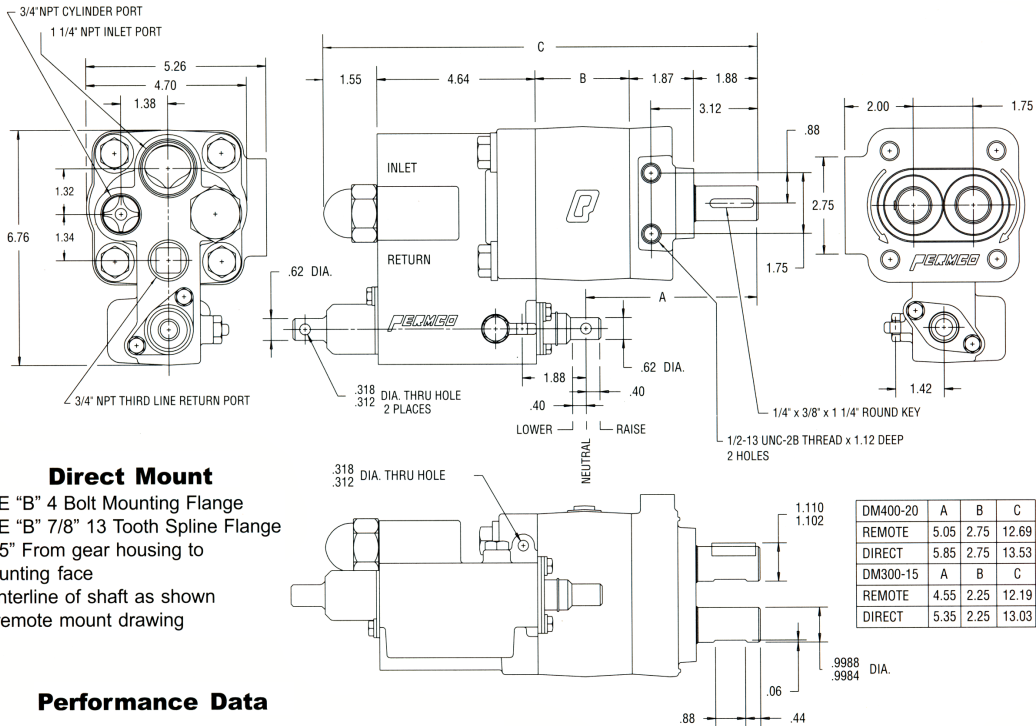
- Pump and cylinder protected in the “Raise” and “Neutral” position of the spool
- Manual or air shifts each with full metering capabilities
- Built-in load check maintains dump body angle and is installed in the cylinder port for superior self-cleaning
- Direct mount SAE “B” 4 bolt or twin shafted remote mount with bracket, other options available
- Built-in direct acting relief valve set at factory
- 100% factory tested
- Flows of 21 and 29 GPM at 1800 RPM
- Pressures to 2500 PSI
- Speeds to 2400 RPM
- High strength alloy steel gear and shaft set
- Neutral lock-out safety cap for use with pull-out cable
- 2 line for intermittent duty or 3 line for continuous duty systems
- Low weight: 36 lbs. for unit with remote mount configuration
- Pressure balanced wear plates maintain high pump efficiency throughout all operating ranges





Pump/Valve Assembly

Dimensional Data (inches)



Direct Mount

SAE "B" 4 Bolt Mounting Flange
 SAE "B" 7/8" 13 Tooth Spline Flange
 2.95" From gear housing to mounting face
 Centerline of shaft as shown in remote mount drawing

Performance Data

DM*300 21.5 GPM @ 1800 RPM and 2000 PSI
 DM*400 29.4 GPM @ 1800 RPM and 2000 PSI

	A	B	C
DM400-20			
REMOTE	5.05	2.75	12.69
DIRECT	5.85	2.75	13.53
DM300-15			
REMOTE	4.55	2.25	12.19
DIRECT	5.35	2.25	13.03

Ordering Code

DM* - 400 - 20 - ** - 200 - AS

Dump Pump

D Direct Mount
R Remote Mount

Cubic inch Displacement
300 3.0 cu. in. / 1.5" gear
400 4.0 cu.in. / 2.0" gear (Std.)

15 1.5" Gear
20 2.0" Gear (Std.)

Z With 3 line sleeve
X Without sleeve

AS Air Shift
Delete Manual Shift

Relief Valve Setting
200 2000 PSI

Direct Mount / Rotation
L Left hand rotation
R Right hand rotation

Remote Mount / Valve Orientation
L Left side (Std.)
R Right side

****Dump Pumps are not recommended for ejector, conveyor, or moving floor type applications; please refer to Gemini brochure (bult # 02-4026) for those type of applications.****



Permco is a leading manufacturer of high-pressure hydraulic gear/vane pumps and motors, flow dividers, intensifiers, and accessories. Available in a wide variety of sizes and configurations to suit your application needs.

**Our Online Support is available
 24/7/365 for your needs!**

Email: support@permco.com

Call: (800) 626.2801



Permco USA | 1500 Frost Road | P. O. Box 2068 | Streetsboro, Ohio 44241

