

Heavy & Medium Duty Trucks & Trailers

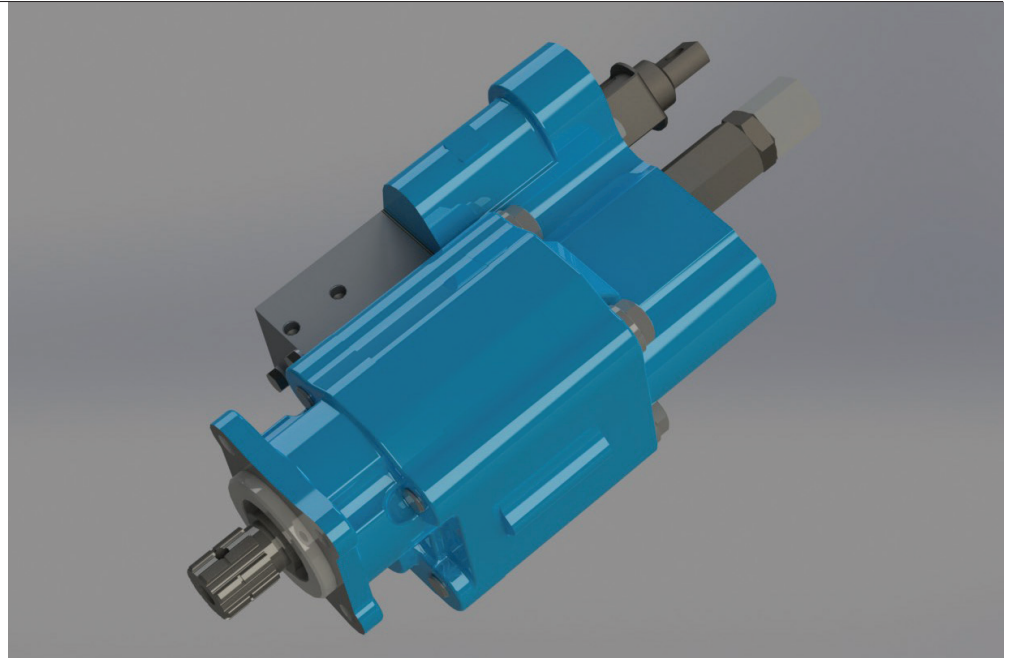
DIN DUMP PUMPS

Precision-Engineered Fluid Power Products

The Sensible Choice for Pump/Valve Assembly



Dump Trucks
Roll Off Trucks
Refuse Collection
Walking Floor



Features

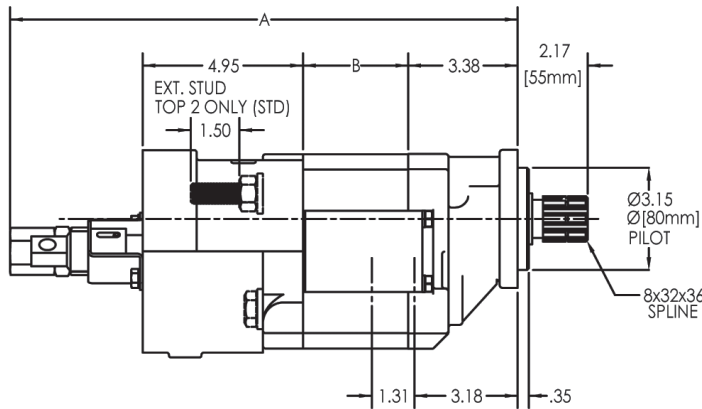
- ISO 7653 4 bolt flange mount $\varnothing 80$ mm pilot
- DIN 5462 - 8 x 32 x 36 spline shaft
- Pump and cylinder protected in the "Raise" and "Neutral" position of the spool
- Manual shift, factory installed "OE" air, or "Add-on" air shifts each with full metering capabilities
- Built-in load check maintains dump body angle and is installed in the cylinder port for superior self-cleaning
- NPT & SAE ports are available
- Built-in direct acting relief valve set at factory
- 100% factory tested
- Flows of 37 and 46 GPM at 1800 RPM
- Pressures to 2500 PSI
- Speeds to 2400 RPM
- High strength alloy steel gear and shaft set
- Neutral lock-out safety cap for use with pull-out cable
- 2 line for intermittent duty or 3 line for continuous duty systems
- 2 extra long studs for easy installation of pump support bracket on direct mount
- Pressure balanced wear plates maintain high pump efficiency throughout all operating ranges

PERMCO

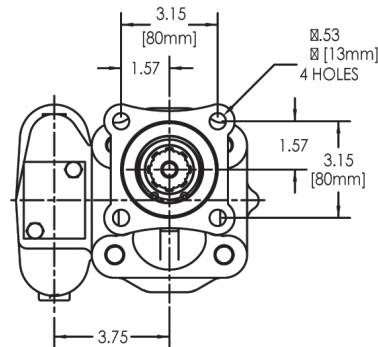
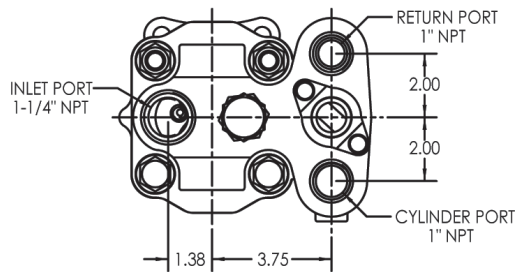


Pump/Valve Assembly

Dimensional Data (inches)



	A	B
DMDIN-20	16.85	2.75
DMDIN-25	17.35	3.25



Pump Code

DMDIN - 25 - Z - L - AS - 20 - **

DMDIN ISO 7653 4-Bolt Ø80mm Pilot
DIN 5462 - 8x32x36 Spline

20 2.0" Gear / 37 GPM at 1800 RPM
25 2.5" Gear / 46 GPM at 1800 RPM

X 2 Line (Without 3 Line S leeve Installed)
Z 3 Line Sleeve Installed

L Left Hand Rotation (CCW)
R Right Hand Rotation (CW)

*Because of potential interference with aftermarket air shift cylinders, we recommend the Permco "OEM" version.

**Extended Stud Orientation

Delete Top Two (Std.)
EB Bottom Two
EL Left Side
ER Right Side
E4 All four

Relief Valve Setting

20 2000 PSI Setting
25 2500 PSI Setting

AS *Air Shift of Main Spool
MS Manual Shift of Main Spool



Permco is a leading manufacturer of high-pressure hydraulic gear/vane pumps and motors, flow dividers, intensifiers, and accessories. Available in a wide variety of sizes and configurations to suit your application needs.

**Our Online Support is available
24/7/365 for your needs!**

Email: support@permco.com

Call: (800) 626.2801



www.permco.com



Permco USA | 1500 Frost Road | P. O. Box 2068 | Streetsboro, Ohio 44241

