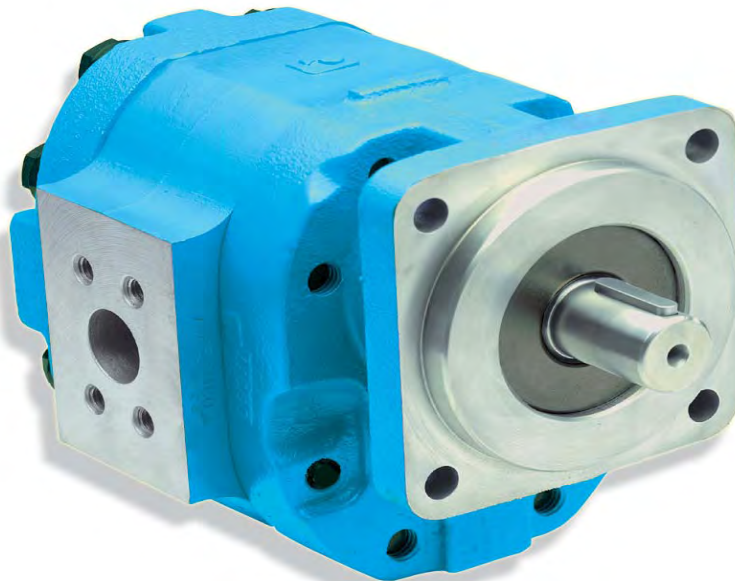


PERMCO

WINCH MOTORS

ROLLER BEARING SERIES WINCH MOTORS 3100/5100/7600



W7600 SERIES SINGLE UNIT

WINCH MOTOR FEATURES

- Heavy duty roller bearing design
- Special high tooth gear set to maximize starting torque
- Start-up torque values up to 4000 in-lbs for single units and 8000 in-lbs for tandem units
- Special designed ring seals and pressure balanced wear plates maintain high motor efficiency throughout all operating ranges
- Cubic inch displacements from 2.00 through 12.1
- Working pressure up to 2500 PSI
- Speeds from 100 to 2400 RPM
- Available in both single and tandem units
- A wide range of porting, mounting and shaft options available
- Doweled and high strength cast iron construction
- 100% factory tested



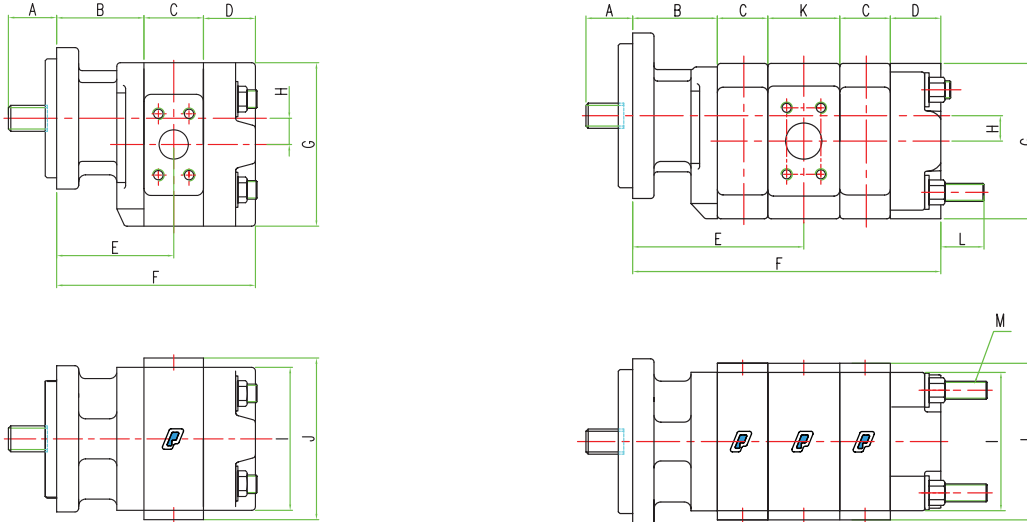
W5100 SERIES TANDEM UNIT



The Sensible Choice



Dimensional Data (inches)



Single Unit

Model	A	B	C	D	E	F	G	H	I	J
W3000/3100	See Drive Shaft	2.94	.75 + GW	1.75	3.31 + 1/2 GW	5.44 + GW	5.50	0.88	4.81	See Gear Housing Codes in Engineers Handbook
W5000/5100	Codes in Engineers Handbook	3.38	.75 + GW	1.75	3.75 + 1/2 GW	5.88 + GW	6.25	1.00	5.06	
W7500/7600	Handbook	3.75	1.00 + GW	2.00	4.25 + 1/2 GW	6.75 + GW	8.00	1.25	6.13	

GW = GEAR WIDTH

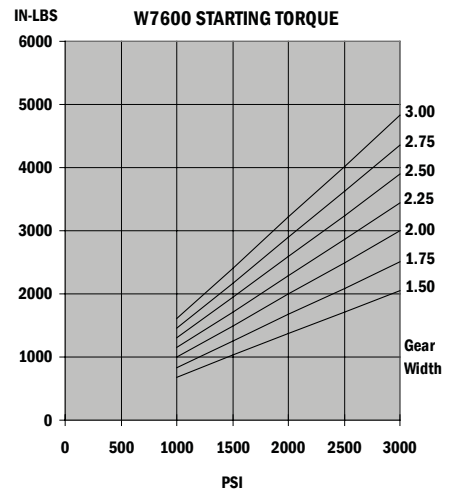
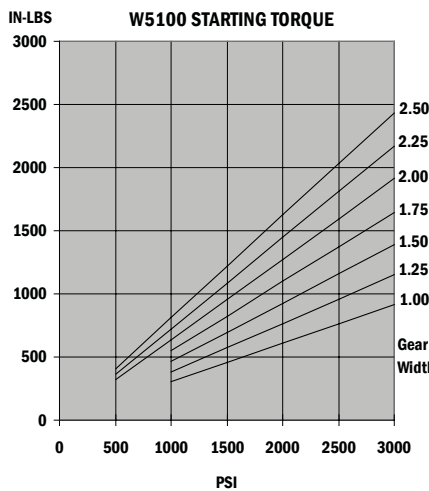
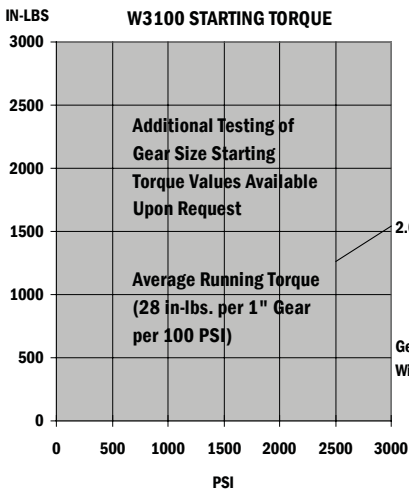
Tandem Unit

Model	A	B	C	D	E	F	G	H	I	J	K	L	M
W3000/3100	See Drive Shaft	2.94	.75 + GW	1.75	4.94 + GW(F)	8.69 + TGW	5.50	0.88	4.81	See Gear Housing Codes in Engineers Handbook	2.50	1.50	5/8-11UNC-2A
W5000/5100	Codes in Engineers Handbook	3.38	.75 + GW	1.75	5.57 + GW(F)	9.50 + TGW	6.25	1.00	5.06		2.88	1.50	5/8-11UNC-2A
W7500/7600	Handbook	3.75	1.00 + GW	2.00	6.25 + GW(F)	10.75 + TGW	8.00	1.25	6.13		3.00	1.50	5/8-11UNC-2A

GW = GEAR WIDTH

GW(F) = GEAR WIDTH (FRONT SECTION)

TGW = TOTAL GEAR WIDTH (FRONT AND REAR GEAR SECTIONS)



In accordance with our policy of continued product development, we reserve the right to change specifications without notice. The data is average test data and should not be misconstrued to represent performance of each unit.

Permco US
1500 Frost Road
P. O. Box 2068
Streetsboro, OH 44241

Phone 330-626-2801
Fax 330-626-2805
e-mail info@permco.com
www.permco.com

Permco Hydraulik AG
P. O. Box 553
6343 Rotkreuz
Switzerland
e-mail heinzm@permco.com

Permco (Tianjin) Hydraulics Inc., Ltd.
236 Jinbindadao Free Trade Zone
TianJin Port, China
e-mail technic@permcotj.com
www.permcotj.com