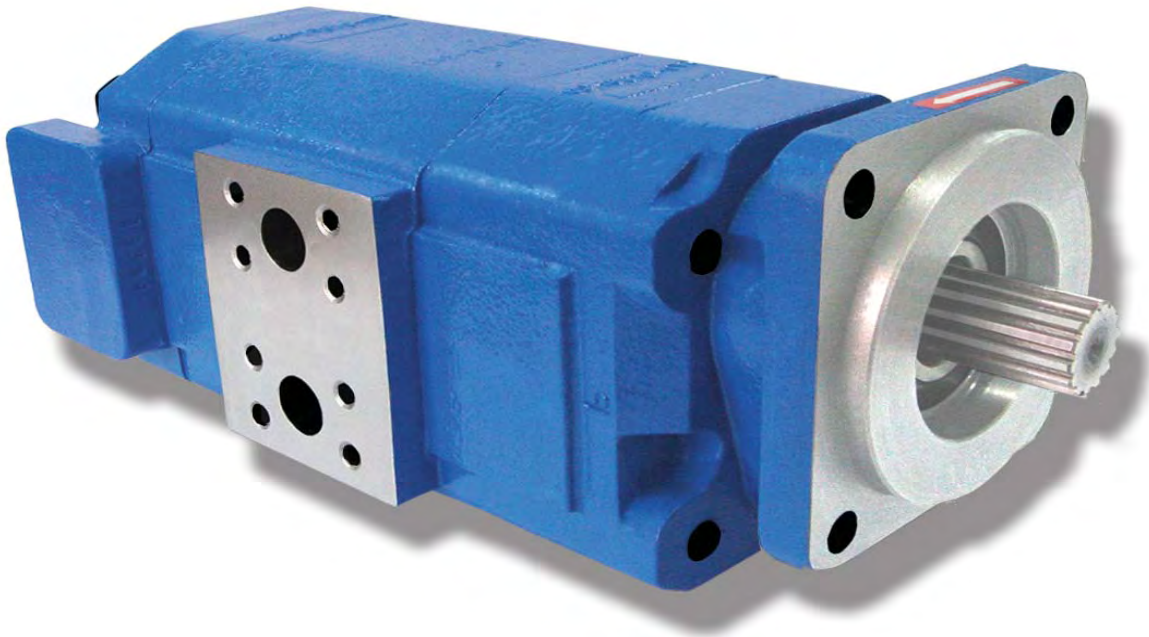


# PERMCO

# 460

## 460 SERIES PUMPS

**HIGH PRESSURE LARGE DISPLACEMENT SLEEVE BUSHING**



**TANDEM,  
SINGLE INLET/DUAL OUTLET**

### FEATURES

- Heavy duty sleeve bushing design in a large frame size
- Cubic inch displacements of 2.70, 3.60, 4.50 and 5.40
- Working pressure up to 4500 PSI
- Speeds up to 2400 RPM
- Flows up to 53 GPM
- Doweled and high strength cast iron construction
- 100% factory tested
- High strength alloy steel gear and shaft sets
- A wide range of porting, mounting, and shaft options available
- Pressure balanced wear plates maintain high pump efficiency throughout all operating ranges
- Both single inlet/single outlet and single inlet/dual outlet bearing carriers available

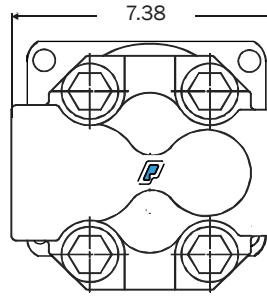
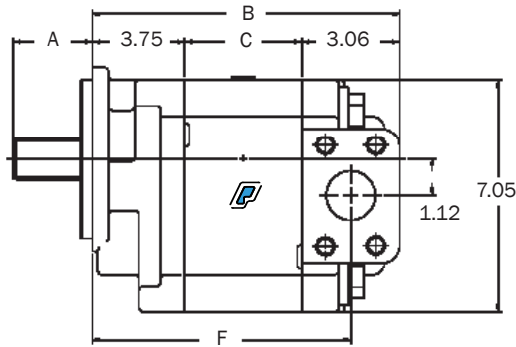


**SINGLE**

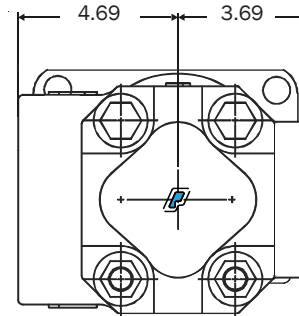
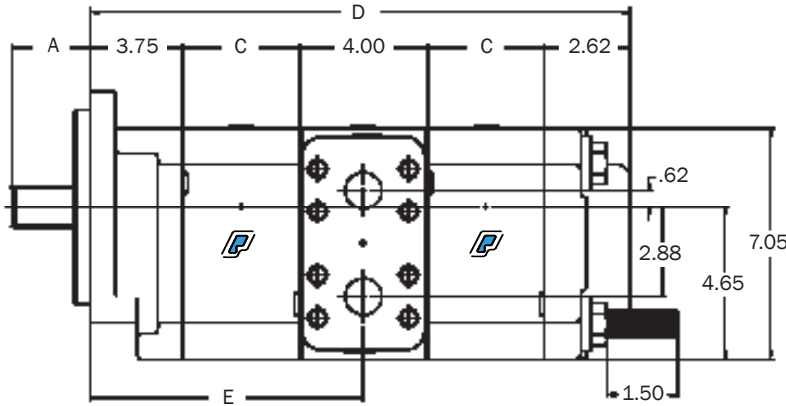


## The Sensible Choice

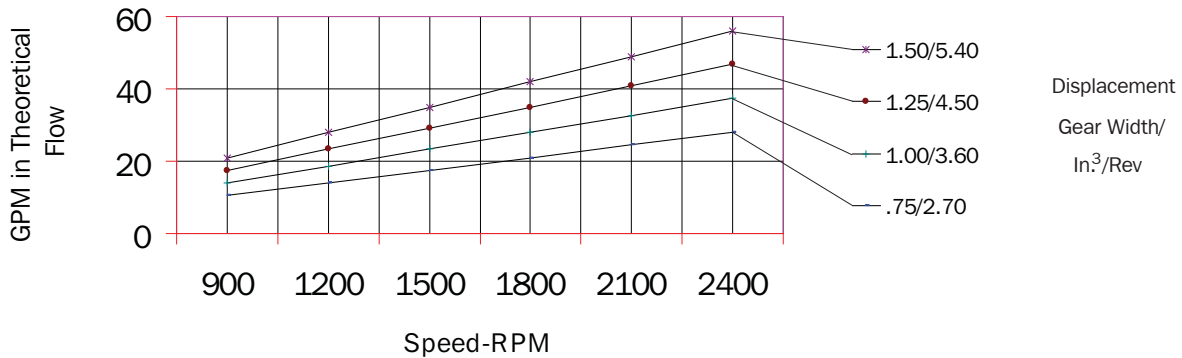
# Dimensional Data (inches)



- A. 2.19" SAE "C" shaft shown, other shafts available
- B. 7.31" plus gear width
- C. 0.50" plus gear width
- D. 11.38" plus total gear width
- E. 6.25" plus front gear width
- F. 5.79" plus gear width



P 460 Performance Chart/Specifications



GEAR WIDTH (IN)	DISPL CU IN/CC	MAX RPM	MIN RPM	MAX PSI/BAR
0.75	2.70/44	2400	600	4500/310
1.00	3.60/59	2400	600	4500/310
1.25	4.50/74	2400	600	4500/310
1.50	5.40/89	2400	600	4500/310