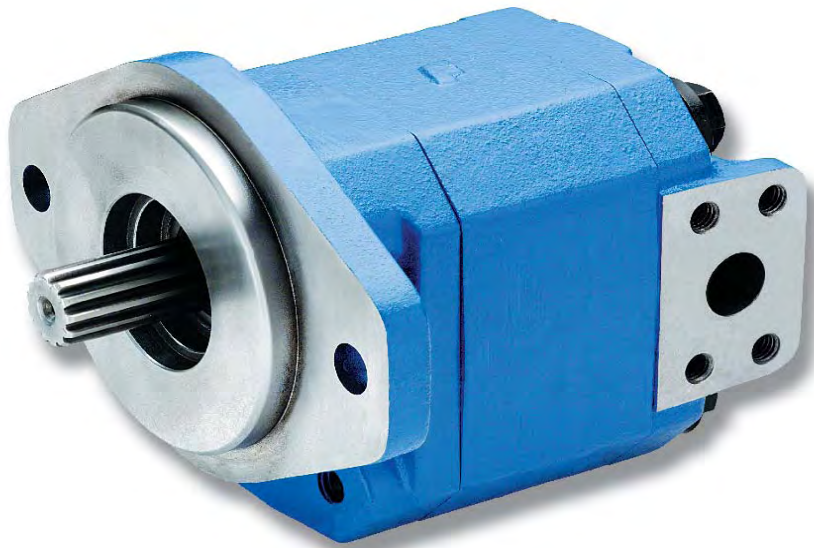


PERMCO

M124

124 MOTORS

SMALL DISPLACEMENT SLEEVE BUSHING MOTORS



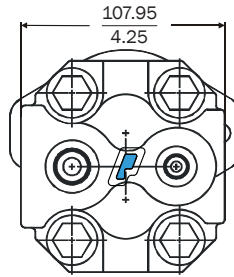
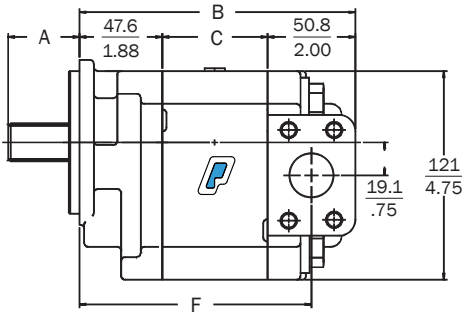
FEATURES

- Heavy duty sleeve bushing design in a small frame size
- Cubic inch displacement from 0.62 through 2.48
- Working pressure up to 3500 PSI
- Speeds up to 3000 RPM
- Torque up to 950 in-lbs
- Doweled and high strength cast iron construction
- 100% factory tested
- High strength alloy steel gear and shaft sets
- Available as a fan drive motor
- A wide range of porting, mounting and shaft options available
- Pressure balanced wear plates maintain high pump efficiency throughout all operating ranges
- Available in single or tandem units

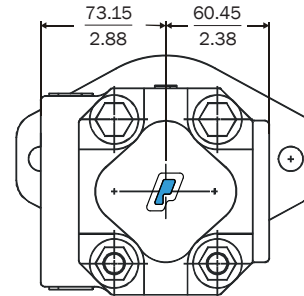
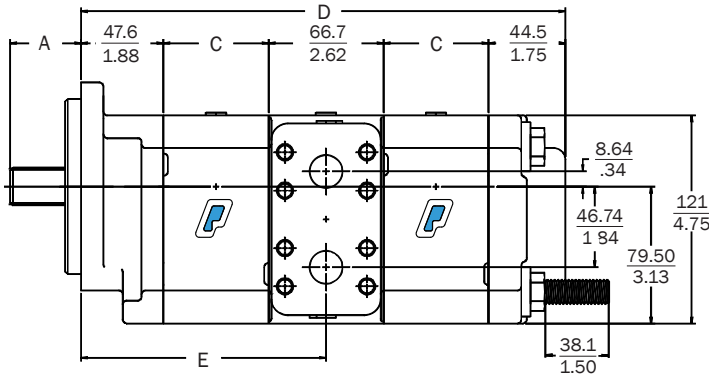


The Sensible Choice

124 DIMENSIONAL DATA (mm/in)



- A. SAE "B" shaft shown, other shafts available
- B. 4.27" (108.56mm) plus gear width
- C. 0.4" (10.16mm) plus gear width
- D. 7.04" (179.12mm) plus total gear width
- E. 3.58" (91.11mm) plus front gear width
- F. 3.27" (83.16mm) plus gear width



Pump dimensions shown; motor port end cover and bearing carrier dimensions vary slightly; consult factory.

M124 Performance Data @ Rated Pressure

Speed (rpm)	Gear Width									
	1.000		1.250		1.500		1.750		2.000	
	Flow (gpm)	Torque (in-lb)	Flow (gpm)	Torque (in-lb)	Flow (gpm)	Torque (in-lb)	Flow (gpm)	Torque (in-lb)	Flow (gpm)	Torque (in-lb)
900	7.7	638	8.2	821	11.1	921	10.9	943	13.7	907
1200	9.3	644	10.2	821	13.6	927	13.9	950	17.1	924
1500	11.0	650	12.2	823	16.1	924	16.9	951	20.3	920
1800	12.5	647	14.3	820	18.6	923	19.8	943	23.7	919
2100	14.1	642	16.3	815	21.1	920	22.8	932	27.0	903
2400	15.8	644	18.3	814	23.6	915	25.7	930	30.3	905
2700	17.3	638	20.3	811	26.1	906	28.7	923	33.6	897
3000	18.9	634	22.3	804	28.6	906	31.6	922	36.9	885

M124 Performance Data @ 2000 PSI

Speed (rpm)	Gear Width									
	1.000		1.250		1.500		1.750		2.000	
	Flow (gpm)	Torque (in-lb)	Flow (gpm)	Torque (in-lb)	Flow (gpm)	Torque (in-lb)	Flow (gpm)	Torque (in-lb)	Flow (gpm)	Torque (in-lb)
900	7.0	346	7.7	462	9.7	546	10.2	642	12.1	719
1200	8.6	349	9.7	461	12.2	551	13.2	648	15.5	731
1500	10.2	354	11.7	462	14.7	556	16.1	648	18.8	727
1800	11.8	358	13.7	461	17.2	551	19.0	646	22.2	727
2100	13.4	353	15.7	456	19.6	546	22.0	640	25.5	723
2400	15.0	354	17.7	451	22.1	541	24.9	629	28.8	710
2700	16.5	346	19.7	448	24.6	528	27.8	624	32.2	704
3000	18.2	347	21.7	444	27.1	524	30.7	617	35.5	698

Performance data given is based on a series of test with ISO 32 Oil @ 120°F and is not representative of any one unit.

Permco
1500 Frost Rd.
P. O. Box 2068
Streetsboro, OH 44241

Phone: 330-626-2801
Fax: 330-626-2805
e-mail: info@permco.com
www.permco.com

Permco (TianJin) Hydraulics Inc., Ltd.
236 Jinbindadao Free Trade Zone
TianJin Port, China
e-mail: technic@permcotj.com
www.permcotj.com

Permco TianJin Fluidpower Mfg.
Fenghua Industrial Park
9th Avenue
TEDA, China 300457