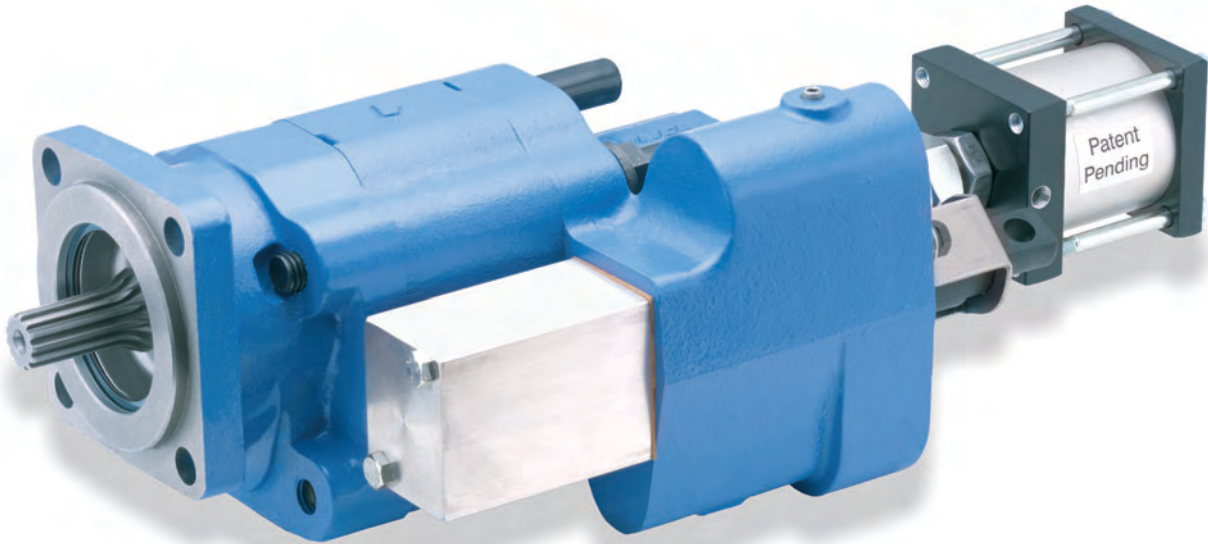


# PERMCO

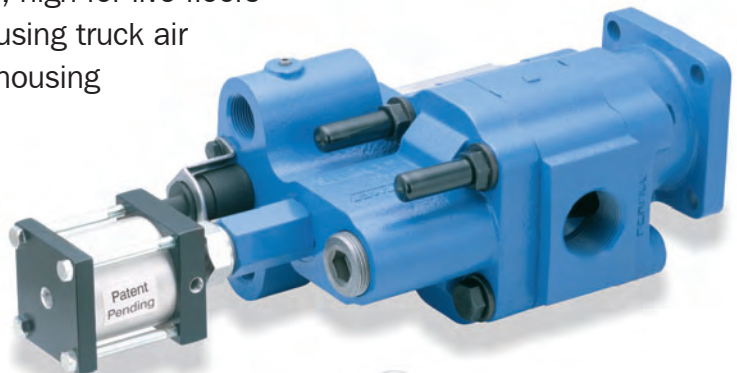
# GEMINI

## **HEAVY DUTY PUMP FOR LIVE FLOORS, MOVING FLOORS, AND DUMP TRAILERS**



### **GEMINI FEATURES**

- ❑ Dual Pressure Relief: low for dump bodies, high for live floors
- ❑ Easy to switch from low to high pressure using truck air
- ❑ Large 1 ½" NPT suction port in the gear housing
- ❑ Three line system for continuous duty
- ❑ Field adjustable relief settings
- ❑ Dowelled construction
- ❑ 37 GPM @ 1800 RPM
- ❑ 100% factory tested
- ❑ Heavy-duty "controlled stress" roller bearings
- ❑ Factory installed "OEM" air shift with full metering capabilities
- ❑ Direct mount SAE "B" 4 bolt or twin shafted remote mount with bracket
- ❑ Relief valve protects the high pressure portion of the system as well as the pump

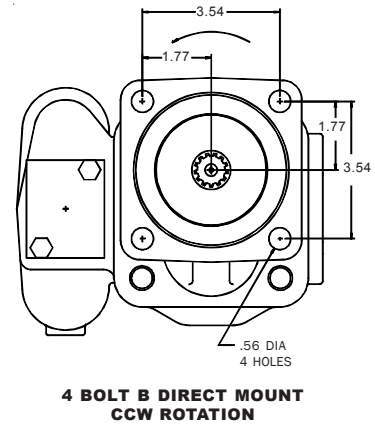
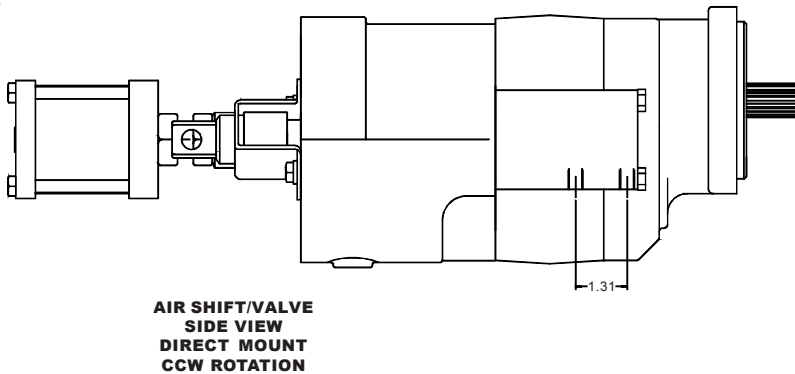
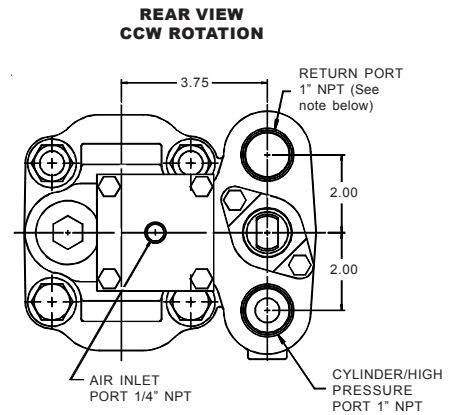
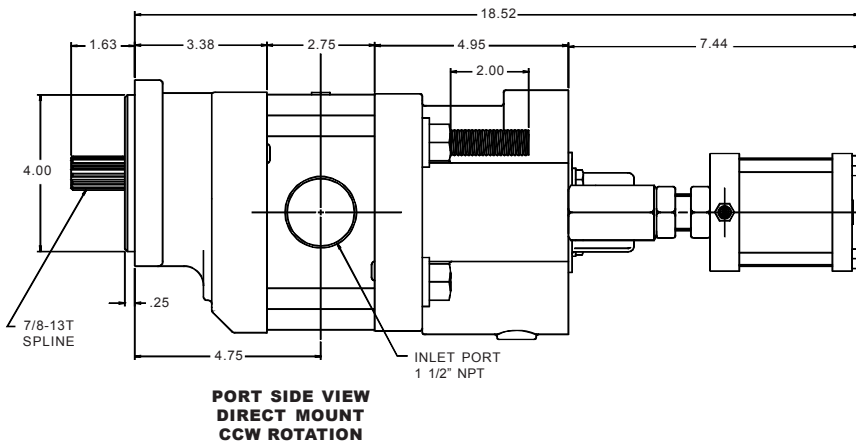


997-01226-8  
Air Shift Tower



## *The Sensible Choice*

# Dimensional Data (inches)



The third line sleeve is installed in the pump, therefore, the return port must be plumbed back to tank, below the oil line at all times.

## Pump Code

<b>DG</b> Direct Mount, SAE 4 Bolt "B"	<b>DG - 20 - Z - L - AS - 25/32 - **</b>
<b>RG</b> Remote Mount	
<b>20</b> 2.0" Gear / 37 GPM at 1800 RPM	
<b>Z</b> 3 Line Sleeve Installed	
<b>L</b> Left Hand Rotation	
<b>R</b> Right Hand Rotation	
<b>AS</b> *Air Shift of Main Spool	

### \*\*Extended Stud Orientation

<b>Delete</b>	Top Two (Std.)
<b>EB</b>	Bottom Two
<b>EL</b>	Left Side
<b>ER</b>	Right Side
<b>E4</b>	All four

### Relief Valve Setting

<b>25</b>	2500 PSI Low Pressure
<b>32</b>	3200 PSI High Pressure

\*Because of potential interference with aftermarket air shift cylinders, we recommend the Permco "OEM" version.



www.permco.com

1500 Frost Rd.  
P. O. Box 2068  
Streetsboro, OH 44241

Phone 330-626-2801  
Fax 330-626-2805  
e-mail info@permco.com

© Bulletin #02-402G